

Comfort and safety

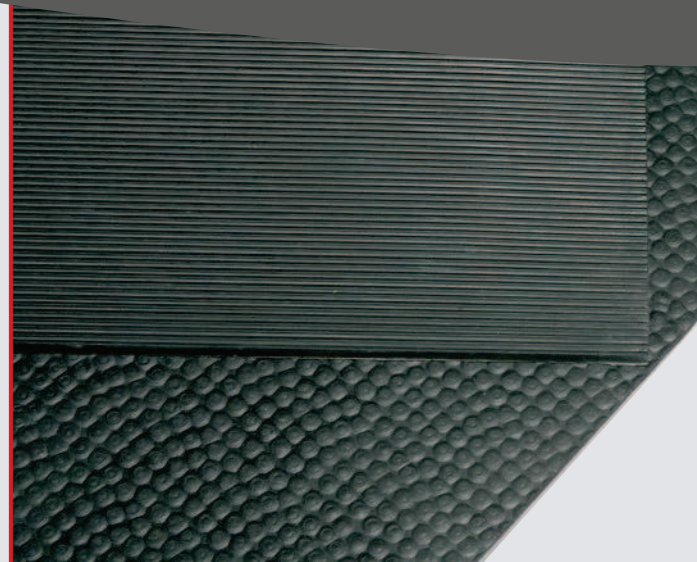
- Mat ensuring excellent thermal insulation
- Non-slip mat thanks to its raised hammered surface

Hygienical, easy maintenance

- Easy to clean with water jet or high water pressure cleaners
- Resistant to most cleaning agents

Versatile

- Can be laid for any other use



Hammered upper side / Striated lower side

Reference	Dimensions	Thickness
STRIE10	2 m x 1 m	10 mm

Cutting to size