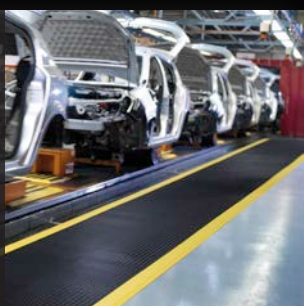




## TECHNICAL MATS AND FLOORING

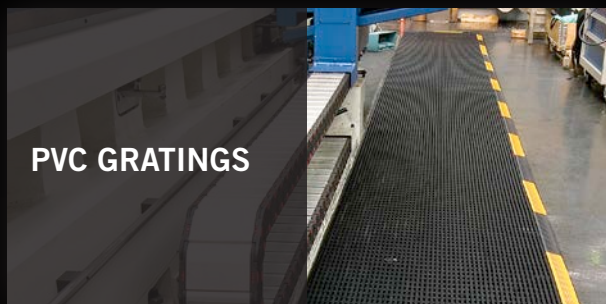
ANTI-FATIGUE  
AND ERGONOMIC  
MATS



RUBBER  
GRATINGS



PVC GRATINGS



INTERLOCKING  
POLYPROPYLENE  
AND PVC TILES



INTERLOCKING  
RUBBER TILES



RUBBER ROLLS



ELECTRIC  
INSULATING MAT



WELDING MAT



Located in the French Alps, IDS - Industrie Développement Services - specializes in technical mats and floor coverings. As a trademark of ID GROUP, IDS belongs to the HID holding company with fully private share.

With more than 20 years of experience, IDS has developed a very complete range of innovative and high-performance industrial mats meeting the most demanding and varied needs. A very large stock of 4000 m<sup>2</sup> is at your disposal in our premises.

If you are looking for a technical mat or flooring we have the solution:  
Just enter the world of IDS ...

## Why choose an ANTIFATIGUE MAT?

Standing work is by far the most demanding and tiring posture for workers. IDS anti-fatigue mats allow prolonged work in a standing position while reducing muscle pain and activating blood circulation. They effectively compensate for the decline in productivity due to fatigue, back and leg pain, as well as joint pain.



- ❶ Muscle aches, heavy legs due to reduced blood flow (compression exerted by body weight on the soles of the feet)
- ❷ Joint pain due to vibrations emitted by the environment (machines for example)
- ❸ Physical fatigue, muscle tension, headache due to prolonged standing often motionless acting negatively on the spine

*The benefits of anti-fatigue mats for your standing work conditions:*

### COMFORT

Anti-fatigue function (the flexibility of the mats leads to a reduction in physical fatigue), sound, thermal and vibration insulation

### SECURITY

Anti-slip function, electrical insulation

### PROTECTION

Work tools falls and shocks damping, floors and equipment protection

### SIGNALING

Delimitation of safety zones thanks to borders of distinctive colors (black / yellow)

*The economic advantages:*

- Significant improvement in the work quality and worker productivity
- One-third reduction in absenteeism costs
- Reduction in the number of sick leaves and the risk of accidents at work
- Effective protection of floors from premature wear

## HOW TO CHOOSE YOUR ANTI-FATIGUE MAT

Ask yourself the right questions :

What type of work environment is it? ➔ Dry, wet, oily, chemical ...

What are the working conditions of the work station? ➔ Static or moving position...

What is the type of attendance? ➔ Foot traffic, machines, pallet trucks...

Reference	Roll	Tiles	Interlocking	Environment				Special application		Metal chip resistance	Fire classification
				Dry	Wet	Oily	Chemical	Antistatic or electrical insulation	Welding		
NT427	x			x							
NT415/NT615	x	x		x							Dfl-S1
NT420	x	x		x							
NT447	x	x		x					x		
NT786	x	x		x				x			
KNEEFLEX		x	x	x							
MBK82/MGY82		x	x	x	x						
MPB82		x	x	x	x	x					
MBK83		x		x	x						
MBY83PR		x		x	x	x					
M90		x	x	x	x						
PU84/PU85		x		x	x	x	x				
MB46	x	x	x	x	x						
MB46PR		x	x	x	x	x					
MB46GRIP		x	x	x		x				x	
MB45		x	x	x	x						
MB45PR		x	x	x	x	x					
MB45GRIP		x	x	x	x	x				x	
M25/M26		x	x	x	x						- / Cfl-S1
M24		x		x	x						
MPR24		x		x	x	x					
MR12	x			x	x						
MR12BB		x		x	x						
M22		x		x	x						
MPR22		x		x	x	x					
M68/M67/M11/M10		x		x	x						
M69/M69CFL		x		x	x						- / Cfl-S1
M69PLUS		x		x	x						- / Bfl-S1
M69 MINI	x			x	x						
EHA950	x	x		x	x	x	x				
EHA917	x	x		x	x	x	x			x	

## Our strengths

ISO 9001:2015

**BUREAU VERITAS**  
Certification



The Management reiterates its commitment provide the necessary resources to continue to improve the satisfaction of its customers and the competitiveness of the company, while ensuring respect for the safety of each and the environment. This quality approach has also helped us to get closer to the certification or standardization institutions (such as LNE, Veritas ...), which is very positive for the sustainability of our products and our activities.

**amfori**

Trade with purpose  
For more information,  
visit [www.amfori.org](http://www.amfori.org)

Member of amfori, ID Group is committed to respecting the principles of open and sustainable trade (respect for the labor code, business ethics, non-use of child labor, non-discrimination, environmental protection ...) We improve the social performance of our supply chain via amfori BSCI.



**REACH REGULATION**

IDS commits itself to the respect of the REACH regulation by banishing from its products all the substances harmful for the man and for the environment

**CO<sub>2</sub> compensé**  
Imprimé  
ClimatePartner.com/10170-2207-1568



In accordance with our desire to reduce our environmental impact, we have chosen to offset the CO<sub>2</sub> emissions related to the printing of this catalogue by financing a sustainable development project.  
Scan the QR code to learn more.

**IDS** INDUSTRY

# Chemical resistance

Chemical	Shape	Concentration	Natural rubber <sup>A</sup>	SBR <sup>B</sup>	Nitrile <sup>C</sup>	Vinyl/PVC <sup>D</sup>	Polypropylene <sup>E</sup>	Polyethylene <sup>F</sup>	Polyurethane <sup>G</sup>
Acetone	liquid		2	2	4	3	1	2	4
Acetic acid	liquid	10 %	4	4	4	3	1	3	2
Acetic acid	liquid	50 %	4	4	3	4	1	3	2
Boric acid	liquid		1	1	1	1	2	1	2
Hydrochloric acid	liquid	10 %	3	3	3	2	1	2	4
Hydrochloric acid	liquid	20 %	2	2	2	2	1	2	4
Hydrofluoric acid	liquid	75 %	3	3	4	2	2	2	4
Nitric acid	liquid	10 %	2	2	2	2	1	3	4
Nitric acid	liquid	60 %	4	4	4	3	3	4	4
Phosphoric acid	liquid	50 %	1	1	3	1	1	2	3
Sulfuric acid	liquid	10 - 50 %	1	1	1	1	1	1	3
Sulfuric acid	liquid	50 - 80 %	3	3	4	4	2	3	4
Aluminum hydroxide	solid		1	1	2	1	-	1	3
Ammonia	liquid/gas		1	1	1	3	1	2	2
Anti-freeze	liquid		1	1	1	2	1	1	3
Benzene	liquid		4	4	4	3	3	3	4
Bromine	gaz	100 %	4	4	4	3	4	4	4
Butanol	liquid		1	1	1	2	2	1	3
Butyl acetate	liquid		4	4	4	-	3	-	4
Slaked lime	solid		1	1	2	2	-	1	3
Chloroform	liquid/gas		4	4	4	4	3	4	4
Calcium chloride	liquid		1	1	1	1	1	1	2
Methylene chloride	liquid		4	4	4	4	3	3	4
Cyclohexanol	liquid		4	4	4	4	2	3	4
Oxygenated bleach	liquid		-	-	3	-	-	-	3
Detergents	liquid		1	1	1	1	1	1	3
Diethylene glycol	liquid		1	1	1	3	-	2	3
Oxygenated water	liquid	30 %	1	1	1	2	1	3	3
Oxygenated water	liquid	85 %	4	4	4	3	3	3	3
Salt water	liquid		1	1	1	1	1	1	1
Unleaded petrol	liquid		4	4	1	3	-	2	3
Ethanol	liquid		1	1	1	3	1	1	2
Formalin	liquid		4	4	-	1	-	1	2
Freon	liquid/gas		2	2	3	-	-	-	3
Diesel	liquid		4	4	1	3	-	2	3
Animal fats / oils	solid/liquid		4	4	2	3	2	3	3
Transmission oil	liquid		4	4	4	3	-	3	3
Hydraulic oil	liquid		4	4	1	3	-	3	3
Mineral oil	liquid		3	3	1	3	1	3	3
engine oil	liquid		4	3	1	2	-	2	3
cooking oils	liquid		4	4	1	3	-	1	3
Kerosene	liquid		4	4	1	1	3	1	3
Brake fluid	liquid		1	1	4	2	-	2	3
Methanol	liquid		1	1	1	1	1	1	1
Methyl ethyl ketone	liquid		4	4	4	4	2	2	4
Octane	liquid		4	4	-	-	2	1	3
Oil	liquid		4	4	1	3	-	3	3
Phenol	liquid		4	4	4	4	1	4	4
Turpentine	liquid		4	4	1	4	4	4	4
Toluene	liquid		4	4	4	4	3	3	4
Trichlorethylene	liquid		4	4	4	4	3	4	4
Vinegar	liquid		3	3	3	2	1	1	2
WhiteSpirit	liquid		4	-	1	3	-	2	3
Xylene	liquid		4	4	4	4	4	3	4

- 1 Insignificant influence, good resistance, suitable for regular contact  
 2 light influence, resistant  
 3 moderate influence, resistant for limited use with short-term contact, field tests required  
 4 strong influence, not resistant  
 - not tested

Information in the table is for reference only. We have samples available for testing under real conditions or for untested products. Tests were carried out at a temperature of 20°C, these may vary depending on the concentration of the products.

A	Natural rubber	MBK83 - M90 - MB46 - MB45 - M25 - M26 - M24 - MR12 - M22 - M68/M67 - M11/M10 - M69 - M69PLUS - M69 Mini - CLIP18 - CLIP SUPER - PEDILUVE
B	SBR	NT447 - PASTILLE - CHECKER - FINESSTRIES - CANNELE
C	Nitrile	MPB82 - MBY83PR - MB46PR - MB46GRIP - MB45PR - MB45GRIP - MPR24 - MPR22
D	Vinyl/PVC	NT427 - NT415 - NT615 - NT420 - NT786 - EHA950 - ERGODECK - IDEX CLAIE EHA
E	Polypropylene	ID.UNIVERSAL
F	Polyethylene	EHA917 - SOFT STEP
G	Polyurethane	PU84 - PU85

## «Fire classification» Pictograms



## Performance pictograms:



## «Anti-slip» pictograms:



## Various pictograms:



Technical sheet





## **Anti-fatigue and ergonomic mats**

Pages 6 to 16

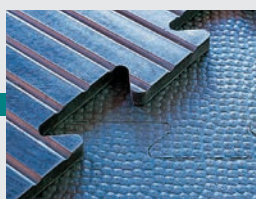


Anti-static and anti-fatigue mat: page 10



## **PVC Gratings**

Pages 26 to 27



## **Interlocking rubber tiles**

Page 31



## **Tactile guidance strips and slabs**

Pages 38 to 39



## **Anti-contamination mat**

Page 41

Pages 17 to 25

## **Rubber gratings**



Pages 28 to 30

## **Interlocking polypropylene and PVC tiles**



Pages 32 to 37

## **Rubber rolls**

Electric insulating mat: page 37



Page 40

## **PVC Strip curtain**



Pages 42 to 43

## **Sanitary gratings**



## The anti-fatigue mat on roll

### Composition:

100% vinyl foam

### Applications:

assembly lines, industrial workstations

### Environment:

dry

### Advantages:

- high quality closed cell vinyl foam
- thermal insulation
- reduces noise and breaks
- protects floors
- bevelled edges to avoid the risk of falling
- yellow marking allowing the delimitation of a safety zone
- anti-slip granulated surface
- economical solution to reduce fatigue from occasional standing

**Colors:** grey (G), black (B) and black with yellow borders (BY)

### + Info:

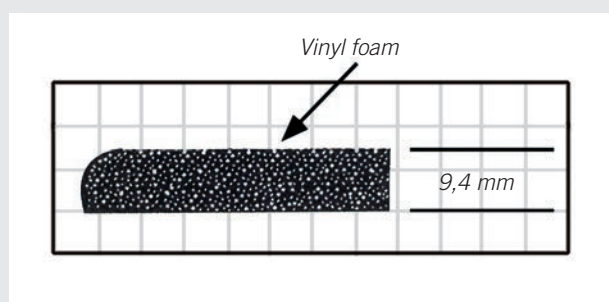
- flexibility obtained by the material: foam



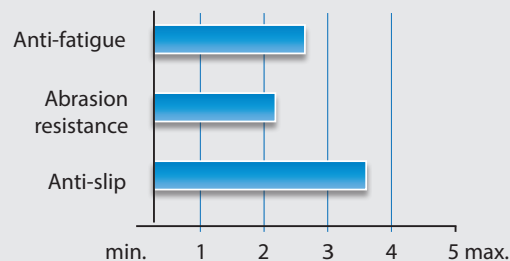
NT427BY61



Upper surface



Reference	Dimensions	Thickness	Weight
NT427G61	0,61 x 18,3 m	9,4 mm	31,0 kg/rl
NT427G91	0,91 x 18,3 m	9,4 mm	47,0 kg/rl
NT427G122	1,22 x 18,3 m	9,4 mm	71,0 kg/rl
NT427B61	0,61 x 18,3 m	9,4 mm	31,0 kg/rl
NT427B91	0,91 x 18,3 m	9,4 mm	47,0 kg/rl
NT427B122	1,22 x 18,3 m	9,4 mm	71,0 kg/rl
NT427BY61	0,61 x 18,3 m	9,4 mm	31,0 kg/rl
NT427BY91	0,91 x 18,3 m	9,4 mm	47,0 kg/rl
NT427BY122	1,22 x 18,3 m	9,4 mm	71,0 kg/rl





## The high performance anti-fatigue mat

**Composition:** 4 mm vinyl upper surface on 100% nitrile closed cell foam of 10 mm (NT415) / 20 mm (NT615)

**Applications:** any type of workstation in the industrial environment with heavy traffic

**Environment:** dry or slightly oily

### Advantages:

- 4 bevelled edges to limit the risk of falling
- very resistant thanks to its vinyl surface
- excellent grip thanks to its tread-plate surface look
- model with yellow marking to delimit a safety zone
- thermal insulation
- relieves back and leg fatigue
- **long lifespan and excellent shape memory** thanks to its thick 100% closed cell nitrile foam
- high resistance to wear
- improves working conditions and productivity for people standing
- high performance anti-fatigue function for 3x8 work
- NT615 : High performance

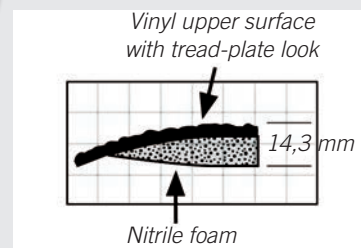
**Colors:** black (B) or black with yellow marking (BY)

### + Info:

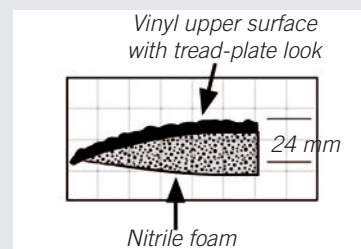
- flexibility obtained by the material: foam
- cutting on request



Upper surface



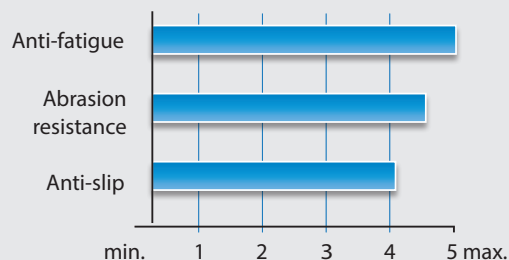
NT415



NT615



Reference	Dimensions	Thickness	Weight
NT415B6191	61 x 91 cm	14,3 mm	3,2 kg/p
NT415B91152	91 x 152 cm	14,3 mm	7,3 kg/p
NT415B612290	0,61 x 22,9 m	14,3 mm	75,5 kg/rl
NT415B912290	0,91 x 22,9 m	14,3 mm	110,9 kg/rl
NT415B1222290	1,22 x 22,9 m	14,3 mm	154,5 kg/rl
NT415BY6191	61 x 91 cm	14,3 mm	3,2 kg/p
NT415BY91152	91 x 152 cm	14,3 mm	7,3 kg/p
NT415BY612290	0,61 x 22,9 m	14,3 mm	75,5 kg/rl
NT415BY912290	0,91 x 22,9 m	14,3 mm	110,9 kg/rl
NT415BY1222290	1,22 x 22,9 m	14,3 mm	154,5 kg/rl
NT615BY912290	0,91 x 22,9 m	24,0 mm	196,0 kg/rl



## Mat for commercial environment

**Composition:** 3 mm vinyl surface on 10 mm 100% nitrile closed cell foam

### Applications:

workstations using ergonomic chairs, standing workstations, packing and shipping preparation stations, commercial workstations

**Environment:** dry, chemical (see table p.4)

### Advantages:

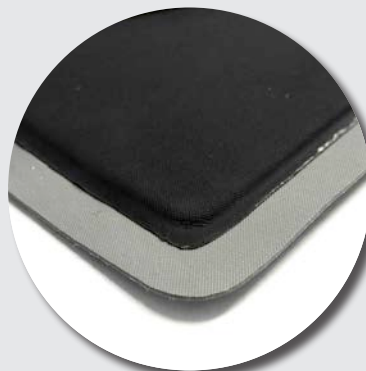
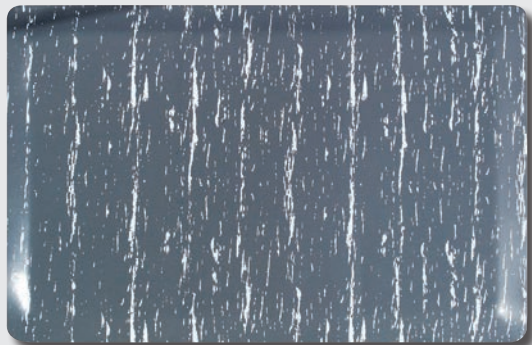
- bevelled edges to avoid the risk of falling
- anti-slip, abrasion-resistant surface
- very efficient for heavy traffic areas
- exceptional comfort throughout the day thanks to its texture
- closed cell non-porous nitrile foam

### Colors:

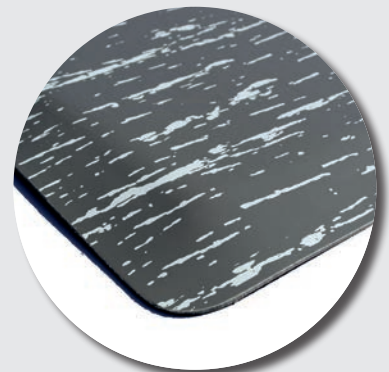
- standard color: marbled grey
- other colors: contact us

### + Info:

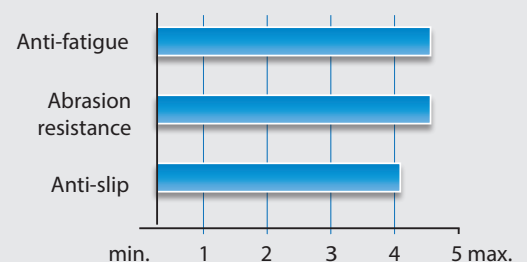
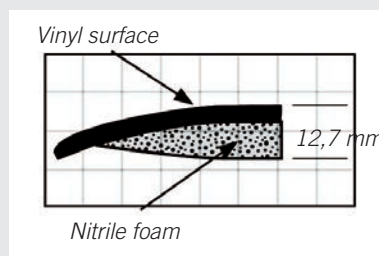
- flexibility obtained by the material: foam
- cutting on request: contact us



Lower surface



Upper surface



Reference	Dimensions	Thickness	Weight
NT420GM6191	61 x 91 cm	12,7 mm	3,2 kg/p
NT420GM91152	91 x 152 cm	12,7 mm	8,2 kg/p
NT420GM611830	0,61 x 18,30 m	12,7 mm	65,5 kg/rl
NT420GM912290	0,91 x 18,30 m	12,7 mm	98,2 kg/rl





## Special welding mat

### Composition:

SBR rubber surface on 100% nitrile closed cell foam

### Applications:

welding and grinding stations

### Environment: dry

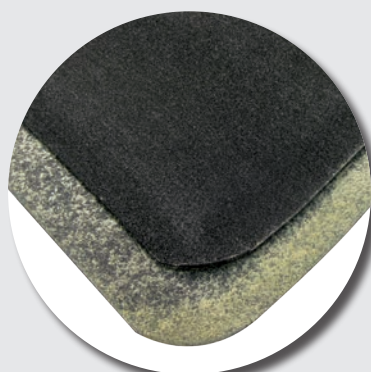
### Advantages:

- bevelled edges to avoid the risk of falling
- resists sparks from welding and grinding
- rough anti-slip surface
- surface very resistant to weld spatter
- long life expectancy
- excellent anti-fatigue performance thanks to high-end 100% nitrile foam

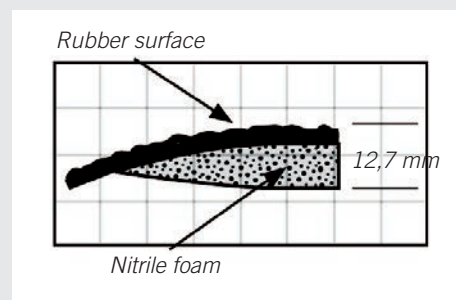
### Color: black

### + Info:

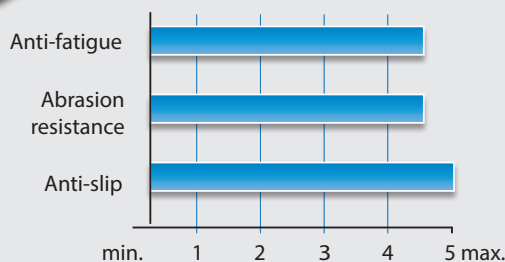
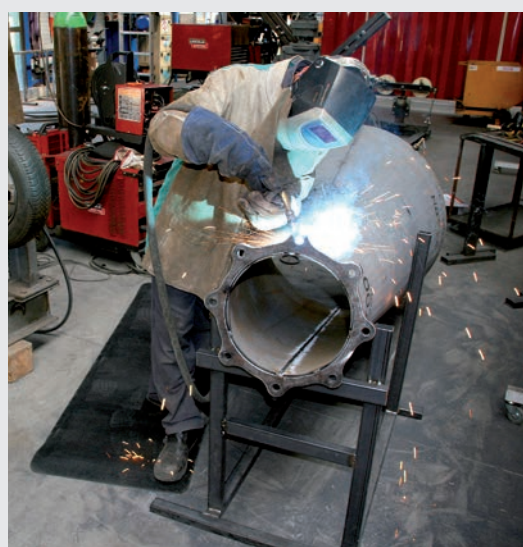
- flexibility obtained by the material: foam
- cutting on request
- custom dimensions: contact us



Lower surface



Upper surface



Reference	Dimensions	Thickness	Weight
NT4476191	61 x 91 cm	13,0 mm	5,0 kg/p
NT44791152	91 x 152 cm	13,0 mm	10,5 kg/p
NT44791	0,91 x 22,90 m	13,0 mm	153,6 kg/rl





## The two-layer anti-static and anti-fatigue mat

### Composition:

4 mm vinyl surface on 10 mm 100% nitrile closed cell foam

### Applications:

all workstations sensitive to the risk of static electricity:  
electronic assembly workshops, commercial environments,  
manufacturing areas, etc.

### Environment:

dry

### Advantages:

- 2 in 1: anti-fatigue and anti-static function
- quick and efficient dissipation of static electricity thanks to the upper surface which is connected with a ground cord
- exceptional comfort thanks to high quality nitrile foam
- improves employee productivity
- bevelled edges to avoid the risk of falling
- Resistivity from  $10^6$  to  $10^9$  Ohms
- conforms to standards EN 100015-1, IEC 61340-5-2 and EN 1815

**Color:** black

**+ Info:** possibility of manufacturing rolls: contact us



## ESD Accessories

### NT793 cord



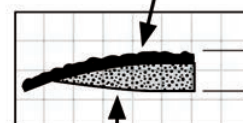
- connects NT786 mat to the earth
- required for all installations
- the ring is to be connected to an electrical outlet and the connection cover to the mat
- length : 4,5 m
- resistance: 1 megohm ( $1 \times 10^6$  Ohms)

### Anklet NT794



- adapts perfectly to all types of shoes
- ensures good dissipation of static electricity from the operator to the mat
- ideal for operators wearing insulating shoes
- rubber sole with one megohm resistance
- scratch fixing

Vinyl upper surface with tread-plate look

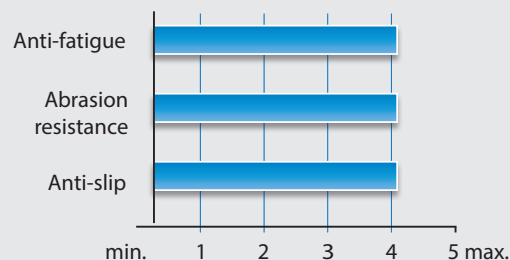


14,3 mm

Nitrile foam



Upper surface



Reference	Dimensions	Thickness	Weight
NT7866191	61 x 91 cm	14,3 mm	3,5 kg/p
NT78691152	91 x 152 cm	14,3 mm	7,3 kg/p
NT78691	0,91 x 22,90 m	13 mm	142,0 kg/rl
NT793	Length : 4,5 m		0,1 kg/p





## The ergonomic knee mat

### Composition:

high-end foam composed of nitrile and PVC

### Applications:

all the positions where you have to kneel or lie down

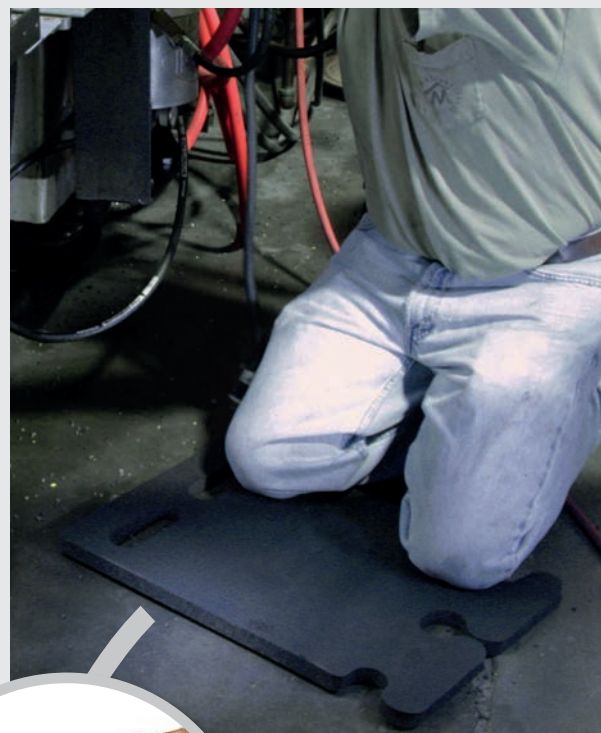
**Environment:** dry, slightly oily or chemical (consult us)

### Advantages:

- patented design to avoid knee, neck and back pain
- portable and versatile
- easily and securely switches from a knee mat to a neck or head support
- non-conductive
- silicone free
- antifungal treatment
- oil resistant
- high abrasion resistance
- comfortable and light product

### Color:

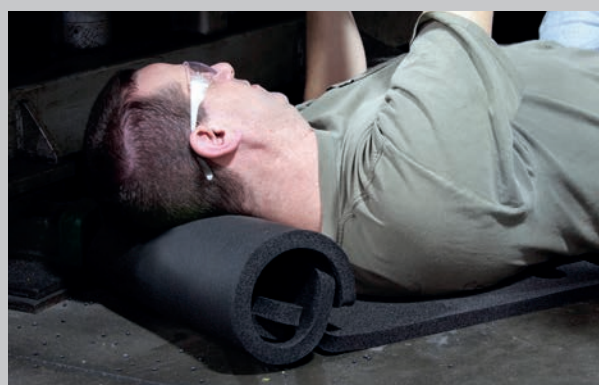
black



Knee mat



Lock the mat in the rolled position using the 2 connectors to obtain support for the neck and head.



It's also possible to get neck support, totally unique head and back by fitting 2 carpets.



Reference	Dimensions	Thickness	Weight
KNEEFLEX3653	36 x 53 cm	19 mm	0,4 kg/p
while stocks last.			

## The ergonomic interlocking mat

**Composition:** 100% nitrile rubber

**Applications:** production and assembly lines, static stations in an industrial or commercial environment, sorting centers, etc.

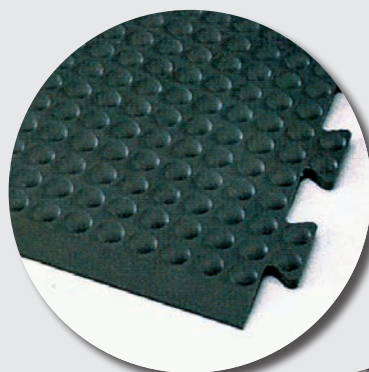
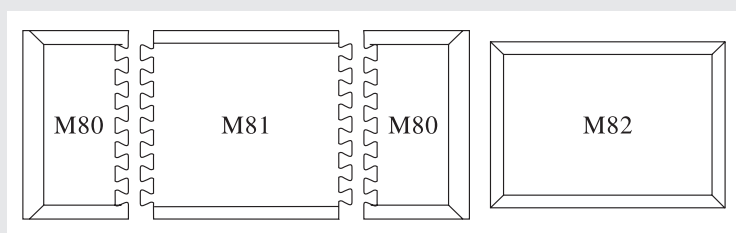
**Environment:** dry, slightly wet, oily

### Advantages:

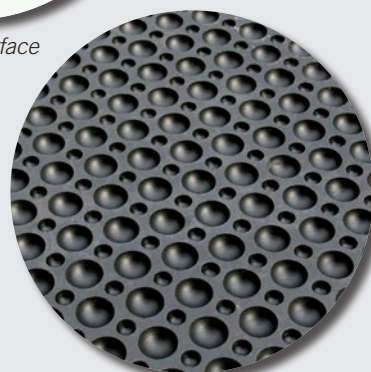
- bevelled edges to avoid the risk of falling
- antislip
- self-weighted
- absorbs shock and insulates from the cold thanks to the bubble design
- sound-proofing
- improves working conditions and productivity for people standing
- long life expectancy
- interlocking to equip long workstations

**Color:** black

**+ Info:** flexibility obtained through design: bubbles and air cushion



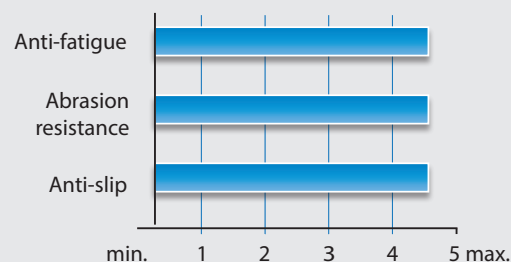
Upper surface



Lower surface



Reference	Dimensions	Thickness	Weight
MPB80	80 x 30 cm	16 mm	2,1 kg/p
MPB81	80 x 70 cm	16 mm	5,1 kg/p
MPB82	60 x 90 cm	16 mm	5,2 kg/p





## The ergonomic mat for safety zones

### Composition:

MBK83: 100 % natural rubber

MBY83PR : natural rubber with 25% nitrile

**Applications:** production and assembly lines, static stations in an industrial or commercial environment, sorting centers, etc.

### Environment:

MBK83 : dry or slightly wet

MBY83PR: dry, slightly wet or with light splashes of oils and greases

### Advantages:

- bevelled edges to avoid the risk of falling
- antislip
- self-weighted
- solid construction
- sound-proofing
- improves working conditions and productivity for people standing
- very good abrasion resistance
- yellow edges to delimit safety zones
- very good grip on the ground thanks to its underside with suction cups

### Colors:

MBK83 : black

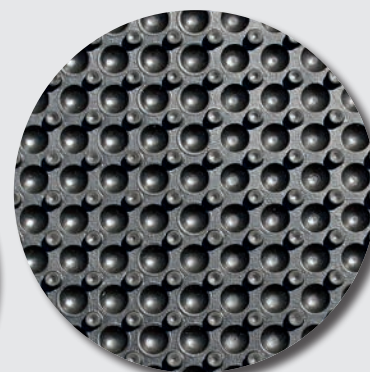
MBY83PR : black with yellow edges

### + Info:

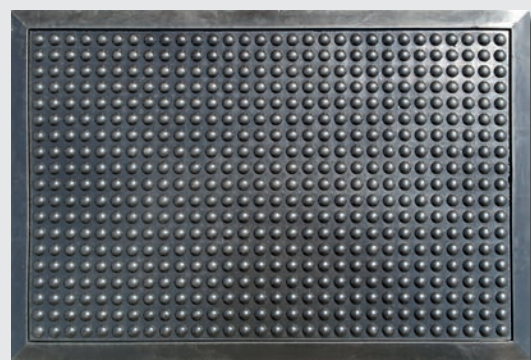
- flexibility obtained by the design: bubbles and studs



Upper surface



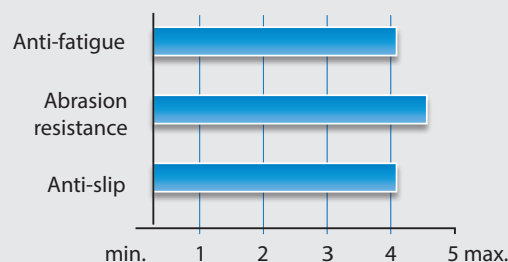
Lower surface



MBK83



Reference	Dimensions	Thickness	Weight
MBY83PR6090	60 x 90 cm	16 mm	4,2 kg/p
MBY83PR90120	90 x 120 cm	16 mm	9,0 kg/p
MBK836090	60 x 90 cm	16 mm	4,2 kg/p
MBK8390120	90 x 120 cm	16 mm	9,0 kg/p



## Interlocking anti-fatigue mat

### Composition:

100% natural rubber

### Applications:

production and assembly lines, static stations in an industrial or commercial environment, sorting centers, etc.

### Environment: dry or slightly wet

### Advantages:

- the honeycomb bottom provides excellent cushioning during long standing positions
- bevelled edges to avoid the risk of falling
- anti-slip surface thanks to its tread-plate look surface
- thermal insulation
- sound-proofing
- interlocking
- easy to install
- the yellow edges delimit the safety zones

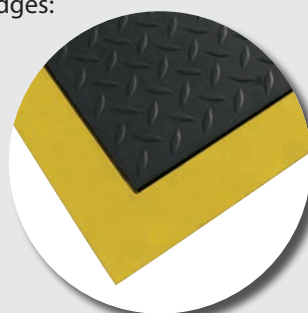
### Colors: black with yellow borders

### + Info:

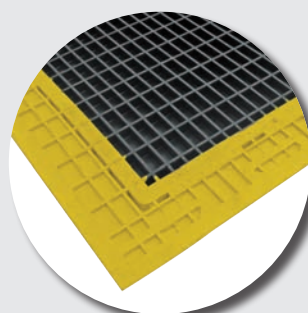
- flexibility obtained through design: studs
- also exists in a nitrile version (red) or without yellow edges: contact us



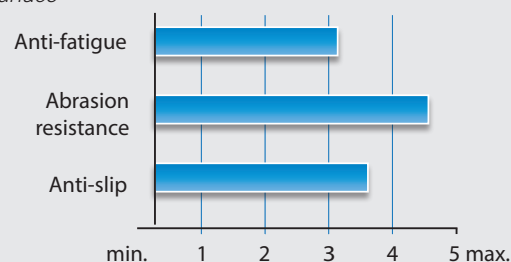
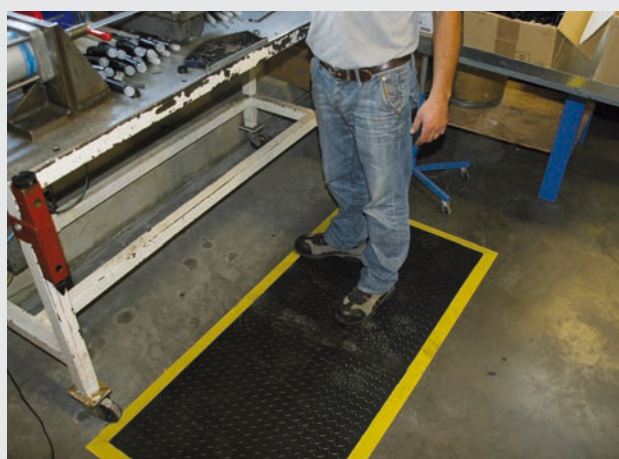
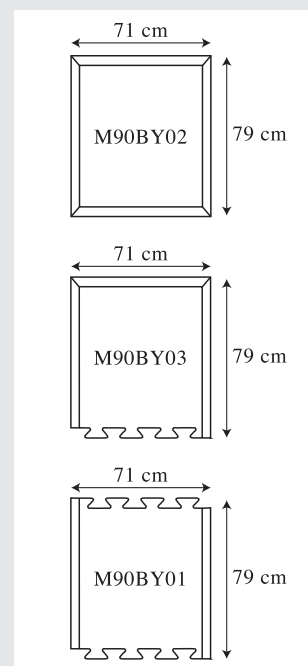
M90BY03



Upper surface



Lower surface



Reference	Dimensions	Thickness	Weight
M90BY01	71 x 79 cm	11 mm	5,0 kg/p
M90BY02	71 x 79 cm	11 mm	5,0 kg/p
M90BY03	71 x 79 cm	11 mm	5,0 kg/p





## The ergonomic polyurethane mat

**Composition:** 100% polyurethane foam

**Applications:** workstations in static position (PU84); moving or rotating workstations (PU85), assembly and packaging lines, workstations in front of machine tools, laboratories, sorting centers, workstations in the commercial environment, etc.

**Environment:** dry or chemical (consult us)

### Advantages:

- very shock absorbing thanks to the material and its special structure with air cushions and bubbles
- four bevelled edges to avoid the risk of falling
- anti-slip: R10 according to DIN 51130 standard
- flattened bubbles for a moving workstation (PU85)
- stimulates blood circulation
- UV resistant
- silicone free
- environmentally friendly: 100% biodegradable and recyclable

**Colors:** standard version: grey - ESD version: black

### + Info:

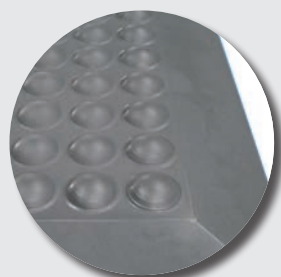
- flexibility obtained by the material (polyurethane foam) and the design (bubbles)
- other versions available on request:
  - antistatic version 105 - 107
- possibility of making any custom size: contact us



PU85



PU85



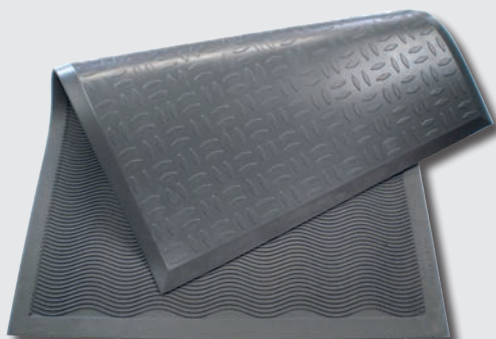
PU84 - Upper surface



PU85 - Upper surface

Other version available:

PU86  
upper surface: tread-plate look  
lower surface: waves



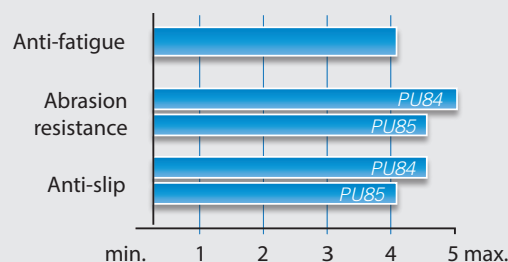
PU84



PU84



PU85



Reference	Dimensions	Thickness	Weight
PU846696	66 x 96 cm	15 mm	3,4 kg/p
PU84 CUSTOM	upon request	15 mm	5,4 kg/m <sup>2</sup>
PU856696	66 x 96 cm	13 mm	3,4 kg/p
PU85 CUSTOM	upon request	13 mm	5,4 kg/m <sup>2</sup>
Other standard dimensions available: consult us			

# MB46 - MB46PR - MB46GRIP TILES

## 100% modular slab

**Composition:** 100% natural rubber (MB46 - black) or nitrile rubber (MB46PR - red\* and MB46GRIP - black)

**Applications:** Industrial and commercial workstations: automotive industry, printing works, assembly lines, cutting area, etc.

### Environment:

- MB46: dry or slightly wet
- MB46PR : dry, slightly wet or oily
- MB46GRIP: dry, slightly oily, splashing of metal chips

### Advantages:

- 100% modular slab thanks to its unique connection system
- easy to transport, install and relocate
- important anti-fatigue function thanks to its revolutionary underside
- thermal insulation
- marking of safety zones thanks to the angles and yellow borders
- antislip
- resistant to grease (MB46PR)
- self-weighted
- resists flying metal chips (GRIP surface) thanks to the silicon carbide surface

**Colors:** black (natural rubber), red (nitrile rubber), or shiny anthracite (nitrile rubber with GRIP)

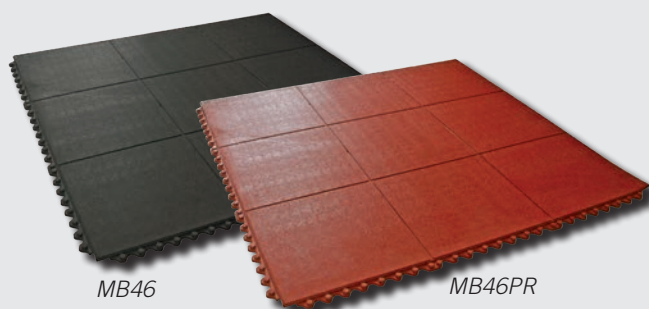
+ **Info:** flexibility obtained through design: studs



MB46

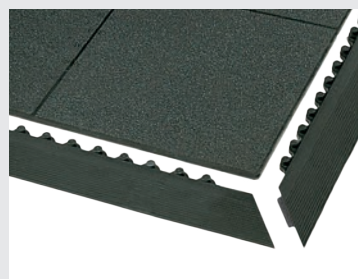


Lower surface



MB46

MB46PR

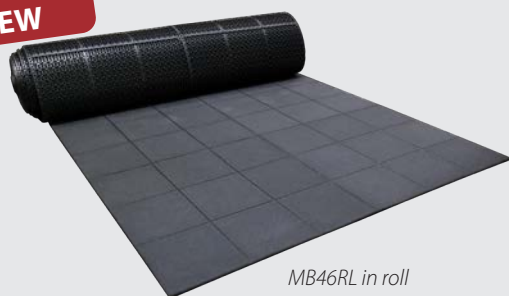


Ramps



Upper surface

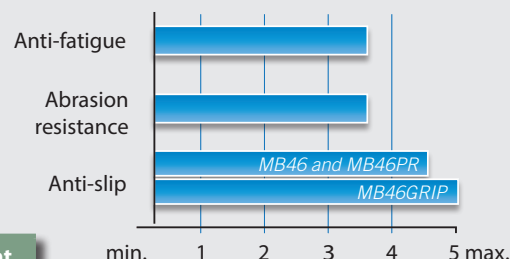
NEW



MB46RL in roll



MB46GRIP



Reference	Dimensions	Thickness	Weight
MB46	91 x 91 cm	14,5 mm	9,1 kg/p
MB46RL (roll)	1,80 x 10 m	14,5 mm	11,0 kg/m <sup>2</sup>
MB46PR (nitrile)	91 x 91 cm	14,5 mm	9,4 kg/p
MB46GRIP (nitrile + grip)	91 x 91 cm	17,5 mm	12,0 kg/p
BRA45N/BRA45PRN/BRAY45N	Black / red / yellow ramps	14,5 mm	0,85 kg/p
BRA45GRIP/BRAY45GRIP	Black and yellow ramps for MB46GRIP	17,5 mm	1,0 kg/p

\* We reserve the right to deliver nitrile quality in black color





# MB45 - MB45PR - MB45GRIP Rubber gratings

17

## 100% modular grating

**Composition:** 100% natural rubber (MB45 - black) or nitrile rubber (MB45PR - red\* and MB46GRIP - black)

**Applications:** around industrial machines, production and assembly lines, kitchens, bars, ...

### Environment:

- MB45: dry or wet
- MB45PR: dry, wet or slightly oily
- MB45GRIP: dry, slightly oily, chip projection

### Advantages:

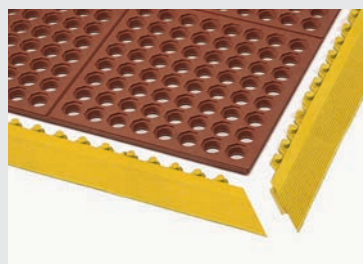
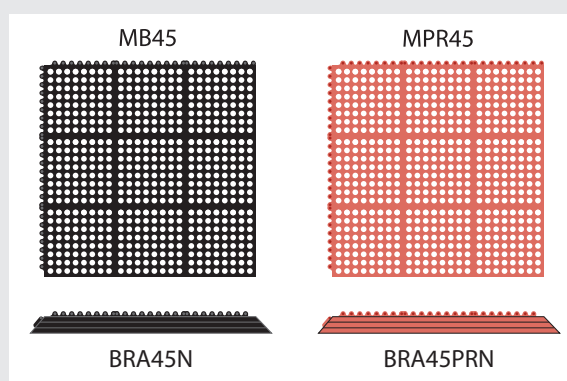
- 100% modular grating thanks to its unique connection system
- excellent drainage and ventilation
- easy to clean thanks to its lightweight
- easy to move, install and relocate
- marking of safety zones thanks to the angles and yellow borders
- antislip
- resistant to grease (MB45PR)
- **resists metal chip splashes (surface with GRIP) thanks to the silicon carbide surface**

**Colors:** black (natural rubber), red (nitrile rubber), or shiny anthracite (nitrile rubber with GRIP)

**+ Info:** flexibility obtained through design: studs and by the material



MB45PR



MB45PR + ramps



Lower surface



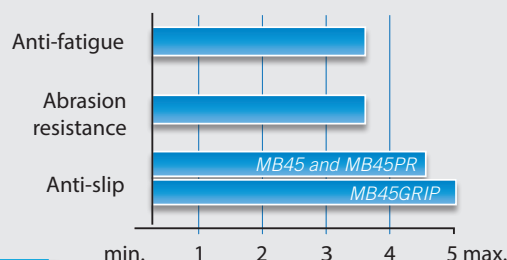
Upper surface



MB45

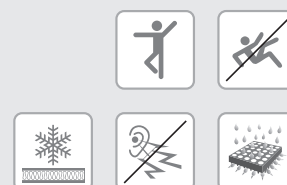


MB45GRIP



Reference	Dimensions	Thickness	Weight
MB45	91 x 91 cm	14,5 mm	6,5 kg/p
MB45PR (nitrile)	91 x 91 cm	14,5 mm	8,0 kg/p
MB45GRIP	91 x 91 cm	17,5 mm	12,0 kg/p
BRA45N/BRA45PRN/BRA45N	Black / red / yellow ramps	14,5 mm	0,85 kg/p
BRA45GRIP/BRA45GRIP	Black and yellow ramps for MB45GRIP	17,5 mm	1,0 kg/p

\* We reserve the right to deliver nitrile quality in black color



### The compact rubber grating

**Composition:** 100% natural rubber

**Applications:** production and assembly lines, static stations in an industrial environment ...

**Environment:** dry or wet

**Advantages:**

- draining thanks to its pinned backing
- antislip
- compact model, very resistant and very dense thanks to its structure with smaller openings
- bevelled edges to avoid the risk of falling
- self-weighted plates which ensure perfect adhesion to the ground
- compliant with the disabled standard LOGC940024A «holes or slots in the ground must be under 2 cm in diameter»
- thermal insulation
- sound-proofing

**Color:** black

**+ Info:**

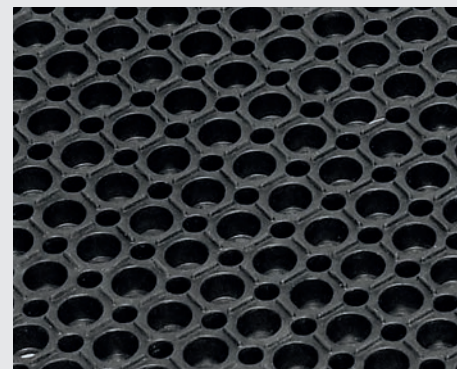
- flexibility obtained by the material
- cutting on request



M26



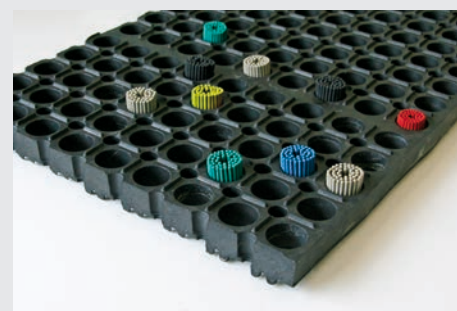
Lower surface



Upper surface



C26 Junction



M26 + Brushes

M25  
M26.01

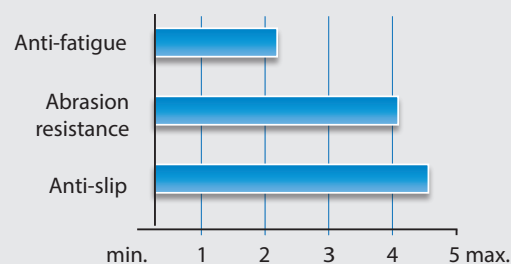
M25 / M26 :  
straight edges

M26.06

M2606 :  
bevelled edges

Reference	Dimensions	Thickness	Weight	Fire classification
M25	100 x 150 cm	22 mm	21,0 kg/p	-
M25CFL	100 x 150 cm	22 mm	21,3 kg/p	Cfl-S1
M2601*	91 x 152 cm	22 mm	20,0 kg/p	-
M2601CFL*	91 x 152 cm	22 mm	21,5 kg/p	Cfl-S1
M2606	98 x 157 cm	22 mm	21,0 kg/p	-
C26	Junction for M25 / M26		0,02 kg/p	-
BROSSEM26CC	Brushes for M25 / M26			-

\* Upon request



R10





# M24 / MPR24 rubber gratings

## The single-user grating with bevelled edges

**Composition:** 100% natural rubber (M24 - black) or nitrile rubber (MPR24 - red\*)

**Applications:** static positions in industrial or food industry, kitchens, bars...

**Environment:**

M24 : dry or wet

MPR24: dry, wet or oily

**Advantages:**

- bevelled edges to avoid the risk of falling
- draining thanks to its pinned backing
- antislip
- easy to clean thanks to its lightweight
- very resistant
- resistant to grease (MPR24)

**Colors:** black (natural rubber) or red (nitrile rubber)

+ **Info:** flexibility obtained through the material



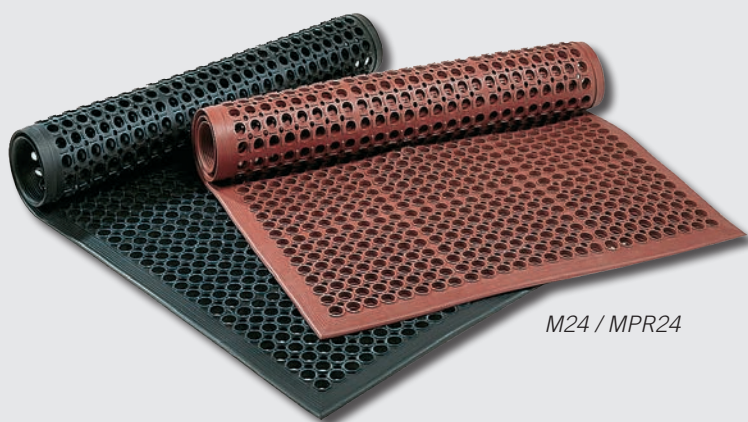
M24



M24 Lower surface



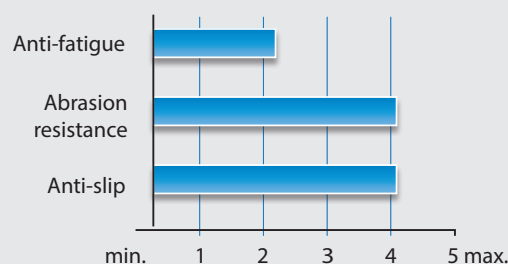
M24 Upper surface



M24 / MPR24



MPR24



Reference	Dimensions	Thickness	Weight
M24	91 x 152 cm	14 mm	9,0 kg/p
MPR24 (nitrile)	91 x 152 cm	14 mm	10,0 kg/p

\* We reserve the right to deliver nitrile quality in black color

## Rubber grating in roll

**Composition:** 100% natural rubber

**Applications:** outdoor walkways or stairs, floor protection, industrial workstations...

**Environment:** dry or wet

**Advantages:**

- rubber grating in roll
- draining thanks to its pinned backing
- antislip
- very light, easy to install
- roll presentation for convenient installation
- compliant with the disabled standard LOGC940024A «holes or slots in the ground must be under 2 cm in diameter»
- thermal insulation
- sound-proofing

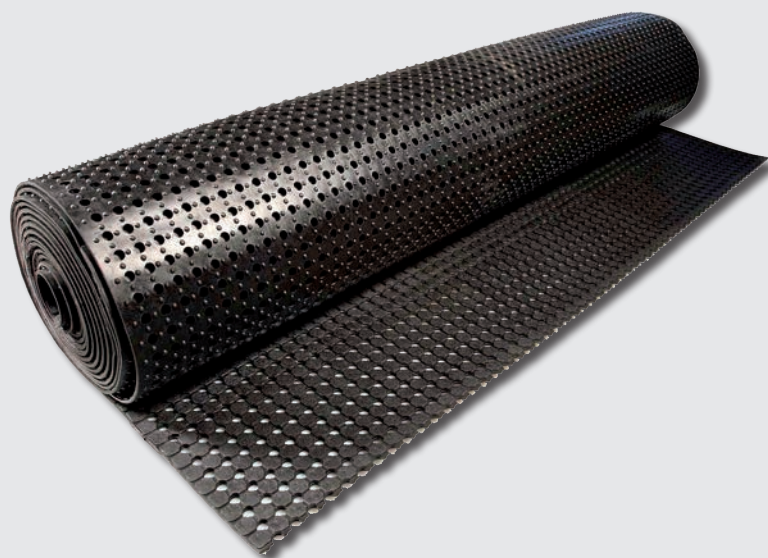
**Color:** black

**+ Info:**

- flexibility obtained by the material
- cutting on request



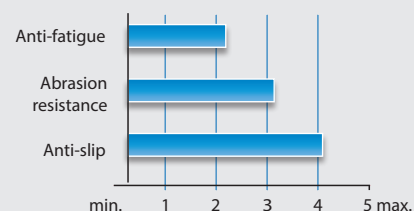
MR12



Upper surface



Lower surface



Reference	Dimensions	Thickness	Weight
MR12RL60	0,60 x 10,0 m	10 mm	7,85 kg/m <sup>2</sup>
MR12RL91	0,91 x 10,0 m	10 mm	7,85 kg/m <sup>2</sup>
MR12	1,83 x 10,0 m	10 mm	7,85 kg/m <sup>2</sup>





## Lightweight rubber grating with bevelled edges

**Composition:** 100% natural rubber

**Applications:** outdoor walkways or stairs, floor protection, industrial workstations...

**Environment:** dry or wet

### Advantages:

- draining thanks to its suction cups on the back
- antislip
- very light, easy to install
- thermal insulation
- sound-proofing
- compliant with the disabled standard LOGC940024A «holes or slots in the ground must be under 2 cm in diameter»

**Color:** black

### + Info:

- flexibility obtained by the material
- Nitrile version (Oil resistant) available on request



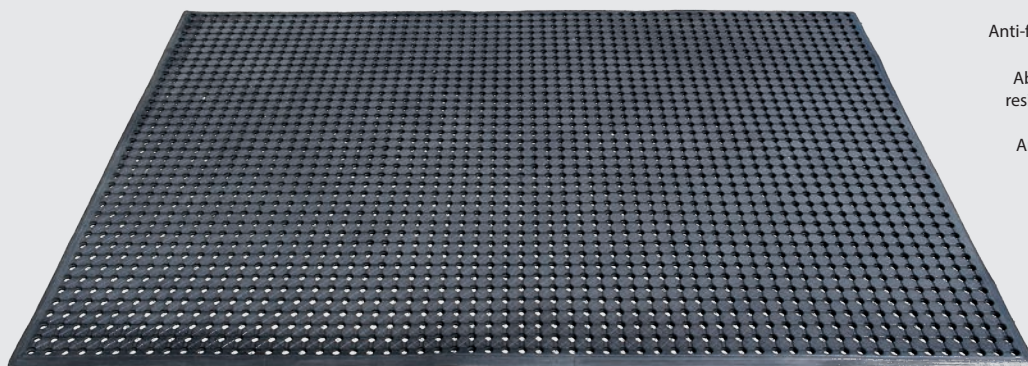
MR12 Bevelled edges



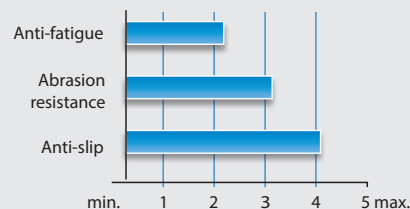
Upper surface



Lower surface



MR12 Bevelled edges



Reference	Dimensions	Thickness	Weight
MR12BB90150	90 x 150 cm	10 mm	11,5 kg/p
MR12BB120180	120 x 180 cm	10 mm	19,0 kg/p



# M22 / MPR22 rubber gratings

## The light grating with straight edges

**Composition:** 100% natural rubber (M22 - black) or nitrile rubber (MPR22 - red\*)

**Applications:** static positions in industrial or food industry, kitchens, bars...

**Environment:** M22 : dry or wet  
MPR22: dry, wet or oily

### Advantages:

- draining thanks to its pinned backing
- antislip
- easy to clean thanks to its lightweight
- very resistant
- resistant to grease (MPR22)
- interlocking thanks to C22 junctions

**Colors:** black (natural rubber) or red (nitrile rubber)

- + Info:**
- flexibility obtained by the material
  - cutting on request



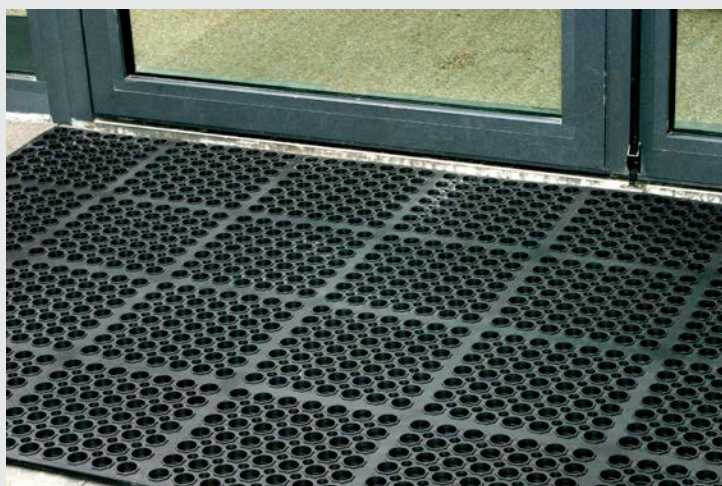
MPR22



Upper surface



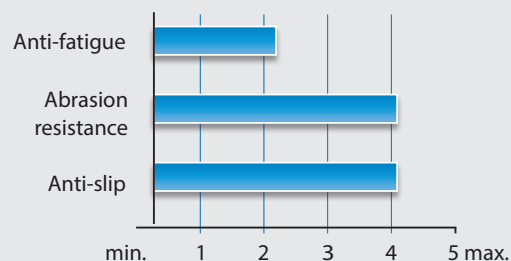
Lower surface



M22



C22 Junction



Reference	Dimensions	Thickness	Weight
M22	100 x 150 cm	14 mm	14,5 kg/p
MPR22 (nitrile)	100 x 150 cm	14 mm	15,0 kg/p
C22	Junction for M22		0,02 kg/p

\* We reserve the right to deliver nitrile quality in black color



## The universal rubber grating

**Composition:** 100% natural rubber

**Applications:** anti-slip applications in areas to be secured ...

**Environment:** dry or wet

### Advantages:

- draining thanks to its pinned backing
- connectable thanks to C68 junctions
- antislip
- flexible
- easy to clean
- very sturdy
- self-weighted
- reassuring

**Color:** black

**+ Info:** - flexibility obtained by the material

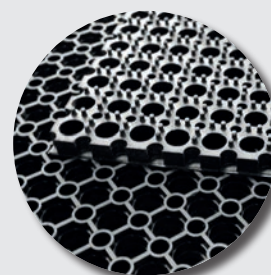
- cutting on request
- gratings with «closed bottom» on request



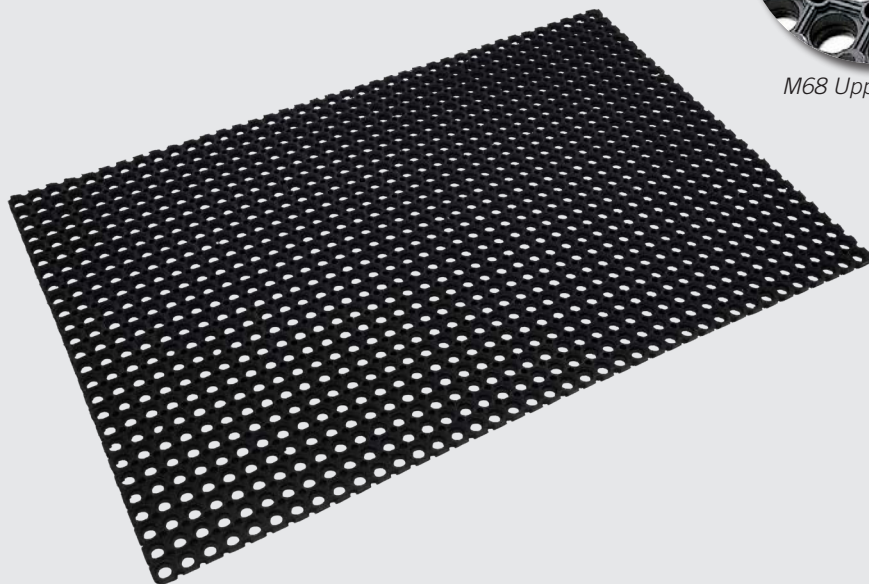
M68



M68 Upper surface

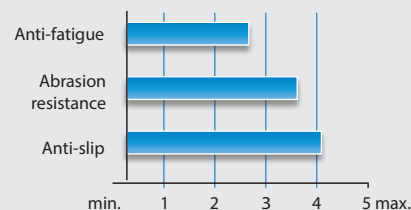


M67 Upper and lower surfaces



Brushes + junctions

Reference	Dimensions	Thickness	Weight
M68	100 x 150 cm	23 mm	13,0 kg/p
M67	100 x 150 cm	23 mm	13,5 kg/p
M11	80 x 120 cm	23 mm	9,0 kg/p
M10	80 x 120 cm	17 mm	5,5 kg/p
M15	50 x 100 cm	22 mm	3,8 kg/p
M85	50 x 80 cm	22 mm	3,4 kg/p
C68	Junction for M68 / M11		0,03 kg/p



M67 only



## The Robust

**Composition:** 100% natural rubber

**Applications:**

heavy duty and anti-slip applications in the areas to be secured

**Environment:** dry or wet

**Advantages:**

- draining thanks to its pinned backing
- antislip
- flexible
- easy to clean
- ultra sturdy
- self-weighted
- reassuring
- sound-proofing
- thermal insulation
- sound-proofing

**Color:** black

**+ Info:**

- flexibility obtained by the material
- cutting on request



M69



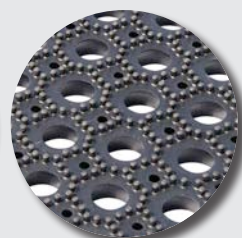
M69 PLUS  
Upper surface



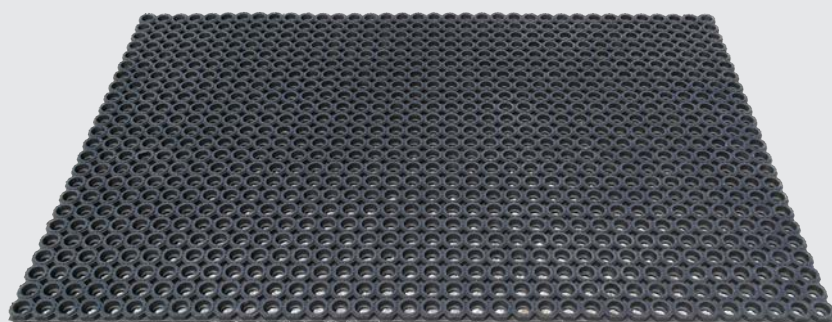
M69 PLUS  
Lower surface



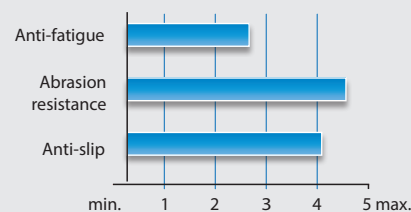
M69 Upper surface



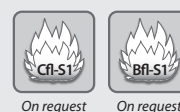
M69 Lower surface



M69+



Reference	Dimensions	Thickness	Weight	Fire classification
M69	100 x 150 cm	23 mm	18,0 kg/p	-
M69CFL	100 x 150 cm	23 mm	18,5 kg/p	Cfl-S1
M69PLUS	100 x 150 cm	23 mm	18,0 kg/p	-
M69PLUS-BFL	100 x 150 cm	23 mm	21,5 kg/p	Bfl-S1
C68	Junction for M69		0,03 kg/p	





# M69 MINI Rubber grating in roll

25

## The lightweight and robust rubber grating in roll

**Composition:** 100% natural rubber

### Applications:

anti-slip applications in areas to be secured ...

**Environment:** dry or wet

### Advantages:

- rubber grating in roll
- draining thanks to its pinned backing
- antislip
- very light, easy to install
- roll presentation for convenient installation
- compliant with the disabled standard LOGC940024A «holes or slots in the ground must be under 2 cm in diameter»
- thermal insulation
- sound-proofing

**Color:** black

### + Info:

- flexibility obtained by the material
- cutting on request
- Nitrile version (Oil resistant) available on request



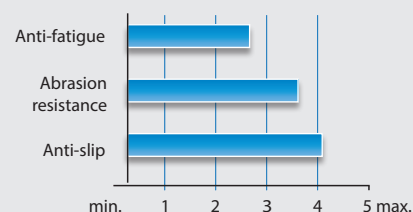
M69 Mini



Upper surface



Lower surface



Reference	Dimensions	Thickness	Weight
M69MINI	1 x 10 m	10 mm	7,3 kg/m <sup>2</sup>



## The ergonomic industrial flooring ensuring your safety

### Composition:

100% soft PVC

### Applications:

industrial workstations: workbenches, assembly or packaging stations, counters ...

### Environment:

dry, wet, oily, chemical (see table p. 4)

### Advantages:

- anti-slip flooring thanks to its profiled surface
- compliant with DIN E 51130: R10
- keeps the workstation always clean and dry thanks to its grating structure
- very good resistance to chemicals and oils
- easily cut with a cutter for perfect adaptation to the configuration of the premises
- good temperature resistance
- yellow marking possible on request for better signage
- good UV resistance

### Colors:

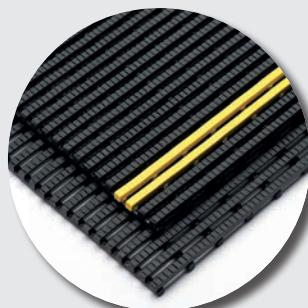
black or black with yellow marking

### + Info:

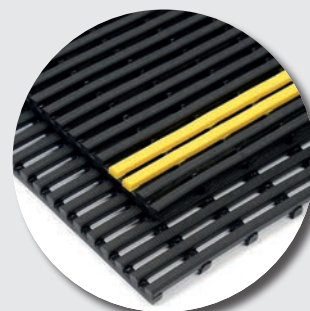
- also available in an ultra anti-slip version (R11 according to DIN E 51130)
- bevelled edges available on request (black or black / yellow)
- fittings available on request to attach a grating to another (3 to 5 fittings per meter)



Yellow marking + bevelled edges

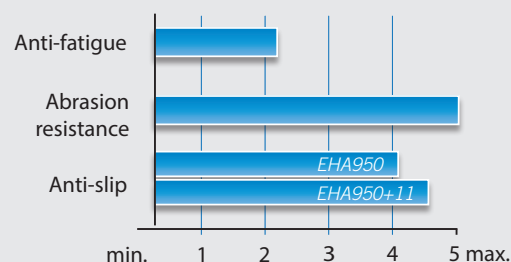


EHA950 R11 version



EHA950 R10 version

Reference	Standard width	Standard length	Custom length	Thickness	Weight
EHA950	60, 80, 100, 120 cm	10 m	All length up to 30 m	12,5 mm	6,0 kg/m <sup>2</sup>
EHA950+11	60, 80, 100, 120 cm	10 m	All length up to 30 m	15 mm	8,0 kg/m <sup>2</sup>
EHA95059	Yellow marking				



R10

R11





## The ecological industrial flooring

### Composition:

100% recycled polyethylene

### Applications:

standing workstations with machine tools, workstations with extremely slippery floors ...

### Environment:

dry, oily, chemical (see table p.4)

### Advantages:

- very anti-slip coating: R11 or R12 version according to DIN E 51130
- extremely robust
- **resists flying metal chips thanks to the silicon carbide surface**
- withstands high mechanical loads
- very good resistance to oils, greases and most chemicals
- easy adaptation to the configuration of the premises
- exists in tiles or rolls
- anti-slip sole for better grip on the ground
- thermal insulation

### Colors:

silver grey (R11 version) or anthracite grey (R12 version)

### + Info :

- bevelled edges available on request (black or black / yellow)
- fittings available on request to attach a grating to another (3 to 5 fittings per meter)



EHA917 R11 version



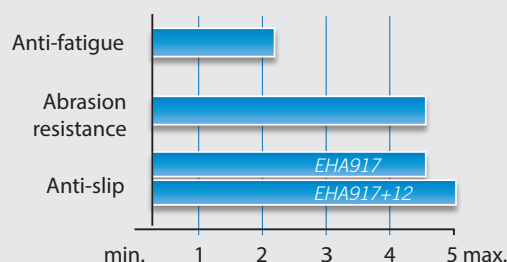
Rolls EHA917 version R11 and R12



EHA917 + borders



EHA917 R12 version



Reference	Standard width	Standard length	Custom length	Thickness	Weight
EHA917	60, 80, 100, 120 cm	10 m	All length up to 30m	18,0 mm	6,5 kg/m <sup>2</sup>
EHA917+12	60, 80, 100, 120 cm	10 m	All length up to 30m	18,0 mm	6,5 kg/m <sup>2</sup>



# ERGODECK

## The resistant and ergonomic system

**Composition:** 100 % PVC

**Applications:** workstations with passage of rolling machines, workstations with a large surface to be equipped ...

### Environment:

- dry (ErgoDeck 562)
- wet (ErgoDeck 560)
- slightly oily (ErgoDeck 563)
- wet and greasy (ErgoDeck 561)

### Advantages:

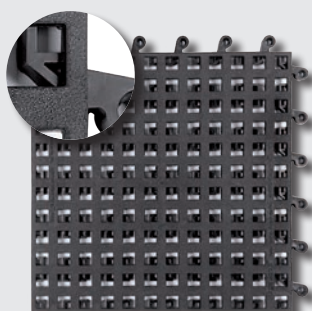
- ergonomic slabs which maintain worker comfort and which at the same time resist the passage of rolling machines and heavy loads
- interlocking slabs on 4 sides for flexible arrangement
- quick installation
- anti-fatigue function thanks to its lower surface consisting of «FlexPoints»
- supports up to 45 tonnes / m<sup>2</sup>
- easily separable and reconnectable panels to obtain a new configuration
- yellow safety angles and ramps available to secure and facilitate access to the slabs by users and rolling machines
- very good resistance to chemicals

### Color:

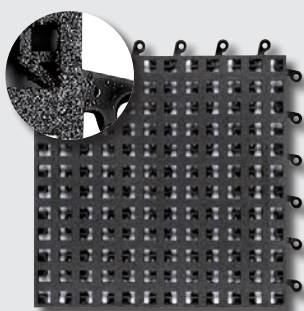
black



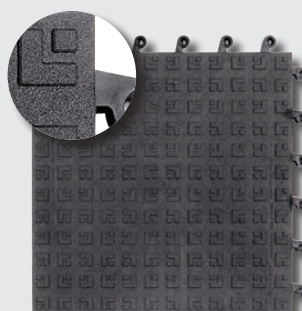
borders + angle



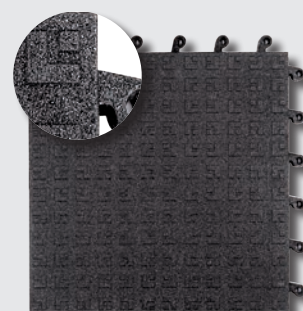
ErgoDeck 560



ErgoDeck 561 (with Grip)

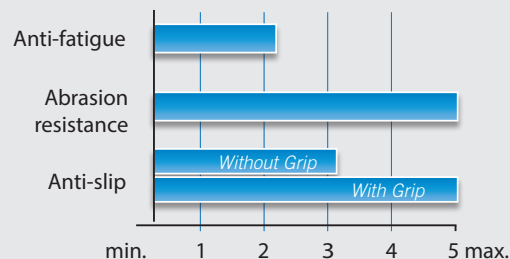


ErgoDeck 562



ErgoDeck 563 (with Grip)

Reference	Dimensions	Thickness	Weight
ERGO_D560_FO_BK	45,7 x 45,7 cm	22 mm	2,3 kg/p
ERGO_D561_FO_BK	45,7 x 45,7 cm	22 mm	2,3 kg/p
ERGO_D562_FF_BK	45,7 x 45,7 cm	22 mm	2,5 kg/p
ERGO_D563_FF_BK	45,7 x 45,7 cm	22 mm	2,5 kg/p
ERGO_D_ANGLE_EXT_J	15,2 x 38,1 cm	22 mm	1,4 kg/p
ERGO_D_ANGLE_J	15,2 x 22,9 cm	22 mm	0,6 kg/p
ERGO_D_RAMP_J	15,2 x 45,7 cm	22 mm	0,4 kg/p





## Opened interlocking slab

### Composition:

recyclable polypropylene anti UV

### Applications:

workshops, storage areas, garages, showroom ...

### Environment:

dry, wet, chemical (see tables page 4)

### Advantages:

- easy ventilation and drainage thanks to its cells
- antislip
- easy installation and maintenance
- withstands weight: 400 T / m<sup>2</sup>
- UV resistant
- very good temperature resistance: -20 ° C / + 60 ° C
- high chemical resistance
- perfect finish possible thanks to edges and angles

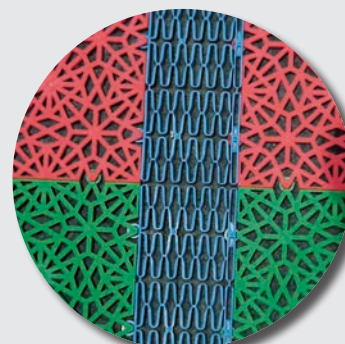
### Colors:

green, white, grey, blue, red

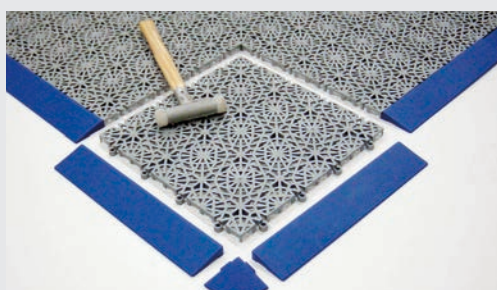
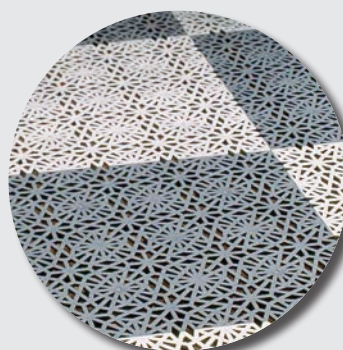
other colors: contact us

### + Info:

expansion joints to be installed every 2.5 to 3 m  
(i.e. every 8 to 10 tiles)



Expansion joint



Borders and angle



Colors

Reference	Dimensions	Thickness	Weight
ID.UNIVERSAL (1 m <sup>2</sup> pack)	30 x 30 cm	13,5 mm	3,0 kg/m <sup>2</sup>
Borders (5 pack)	30 x 5,5 cm	13,5 mm	0,25 kg/pack
Angles (4 pack)	5,5 x 5,5 cm	13,5 mm	0,04 kg/pack
Expansion joints (2 pack)	30 x 7,5 cm	13,5 mm	0,21 kg/pack



# IDEX Tiles

## Interlocking PVC tiles

**Composition:** Flexible recyclable PVC

### Applications:

- hard quality 92 ShoresA: workshops, industrial warehouses, shops, showroom ...
- flexible quality 78 ShoresA: less severe applications such as offices, cold rooms ...

**Environment:** dry with light splashes of oils or chemicals  
(list on request)

### Advantages:

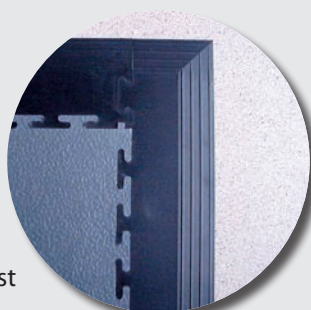
- granulated or pellet finish
- high resistance to wear and abrasion
- antislip
- quick and easy to set up: loose installation with a mallet
- high chemical resistance
- dovetail fitting
- easy to maintain
- high resistance to weight

**Colors:** dark grey, red, blue, green

### + Info:

contact us for:

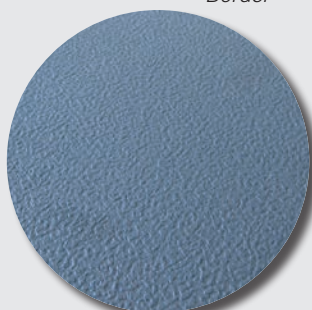
- forklift passage
- antistatic quality
- maintenance sheet available on request



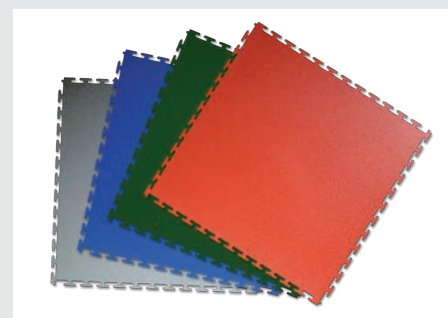
Border



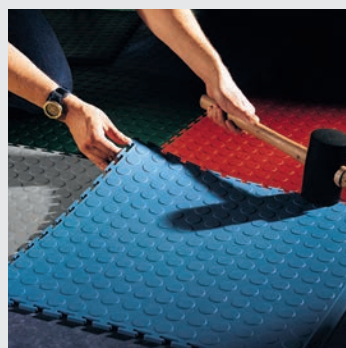
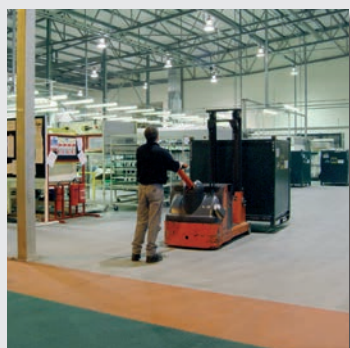
Pelletized surface



Granulated surface



Colors swatch



Reference	Dimensions	Thickness	Weight
IDEX5P (pelleted)	50,1 x 50,1 cm	5 mm	8,0 kg/m <sup>2</sup>
IDEX5G (granulated)	50,1 x 50,1 cm	5 mm	8,0 kg/m <sup>2</sup>
IDEX5B (border)	50,1 x 7,8 cm	5 mm	1,2 kg for a 4 pack
IDEX5A (angle)	59,2 x 7,8 cm	5 mm	1,4 kg for a 4 pack
Packaging by cardboard of 2.5 m <sup>2</sup> - Also available in thickness 7 mm			

R10





## Highly resistant rubber slab

### Composition:

100% natural rubber

### Applications:

protection of floor or mechanical parts requiring heavy handling (risk of falling, ...), protection of the material and the ground when handling barrels, ...

### Environment:

dry or wet

### Advantages:

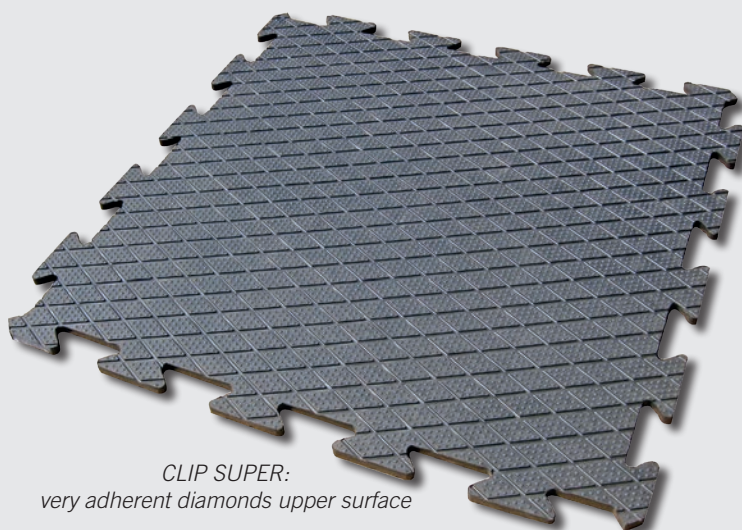
- extremely robust
- easy installation and dismantling thanks to the puzzle system
- self-weighted tiles
- excellent thermal and acoustic protection
- draining thanks to its grooved lower surface
- non-slip thanks to its hammered upper surface
- free standing
- easy maintenance

### Colors:

- standard: black
- special production possible in green, blue, red and grey: contact us



CLIP 18  
Grooved lower surface /  
hammered upper surface



CLIP SUPER:  
very adherent diamonds upper surface

Reference	Dimensions	Thickness	Weight	Fire classification
CLIP18 (black)	100 x 100 cm	16 mm	23,0 kg/p	Dfl-S2
CLIP18B (blue)	100 x 100 cm	16 mm	23,0 kg/p	Bfl-S1
CLIP18G (grey)	100 x 100 cm	16 mm	23,0 kg/p	Bfl-S1
CLIP18V (green)	100 x 100 cm	16 mm	23,0 kg/p	Bfl-S1
CLIP18R (red)	100 x 100 cm	16 mm	23,0 kg/p	Bfl-S1
CLIP18CFL (black)	100 x 100 cm	16 mm	22,0 kg/p	Cfl-S1
CLIP SUPER	100 x 100 cm	18 mm	21,0 kg/p	-



Clip 18 black



Clip 18 CLF



Clip 18 colored



## The pelleted flooring

### Composition:

100% SBR rubber

### Applications:

commercial and industrial premises, counters, sorting centers, halls...

### Advantages:

- antislip
- flexible
- high abrasion resistance
- sound-proofing
- easy maintenance
- rough lower surface for easy gluing

### Colors:

- standard: black or grey
- other colors: contact us

### + Info :

- grease resistant nitrile version on request
- two-component PU glue available from stock: contact us



Black



Grey

Reference	Dimensions	Thickness	Weight
PAST100N3	1,0 x 10 m	3 mm	4,0 kg/m <sup>2</sup>
PAST120N3 (black)	1,20 x 10 m	3 mm	4,0 kg/m <sup>2</sup>
PAST120G3 (grey)	1,20 x 10 m	3 mm	4,0 kg/m <sup>2</sup>

Pellet height: 1 mm - Pellet diameter: 24 mm



Uniquement  
référence 120N3



## The industrial rubber mat

### Composition:

100% SBR rubber

### Applications:

commercial and industrial premises, counters, sorting centers, halls, protection of industrial floors as well as shelving or workbenches...

### Advantages:

- antislip
- flexible
- high resistance to wear and tear
- rough lower surface for easy gluing

### Colors:

- black or grey
- other colors: contact us

### + Info:

- two-component PU glue available from stock: contact us



Rubber rolls



Black



Grey

Reference	Dimensions	Thickness	Weight
CHECKER100N3	1,0 x 10,0 m	3 mm	4,3 kg/m <sup>2</sup>
CHECKER140N3 (black)	1,40 x 10 m	3 mm	4,3 kg/m <sup>2</sup>
CHECKER140N6 (black)	1,40 x 10 m	6 mm	8,4 kg/m <sup>2</sup>
CHECKER140G3 (grey)	1,40 x 10 m	3 mm	3,9 kg/m <sup>2</sup>
CHECKER140N3NBR (nitrile)	1,4 x 10 m	3 mm	4,3 kg/m <sup>2</sup>



Only 140N6



## The grooved mat

### Composition:

100% SBR rubber or 100% nitrile rubber

### Applications :

protection of industrial floors as well as shelving or workbenches

### Advantages:

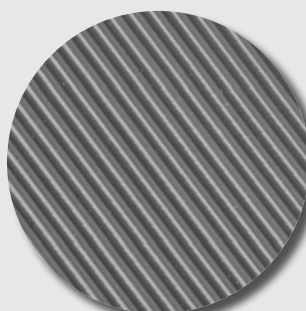
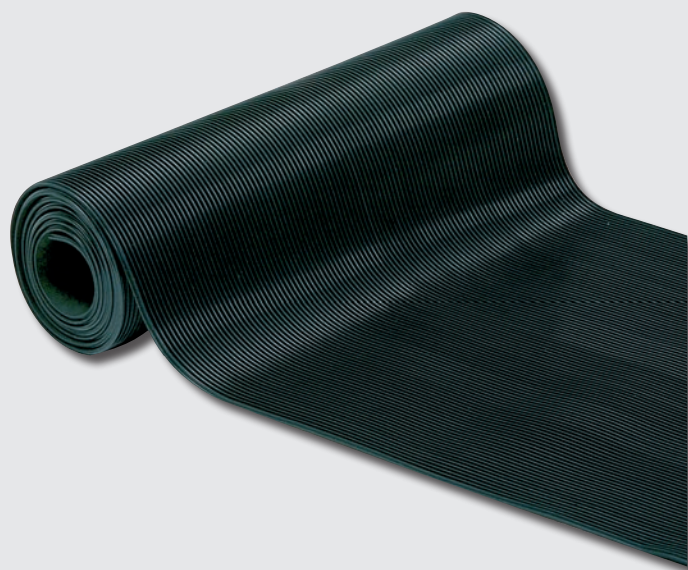
- antislip
- flexible
- high resistance to wear and tear
- fabric imprint lower surface for easy gluing
- easy cutting

### Colors:

- black or grey
- other colors: contact us

### + Info:

- two-component PU glue available from stock: contact us



Grey



Black

Reference	Dimensions	Thickness	Weight
FINES60NN	0,60 x 10 m	3 mm	2,5 kg/m <sup>2</sup>
FINES120N (black)	1,20 x 10 m	3 mm	2,5 kg/m <sup>2</sup>
FINES100N (black)	1,00 x 10 m	3 mm	2,5 kg/m <sup>2</sup>
FINES120G (grey)	1,20 x 10 m	3 mm	2,7 kg/m <sup>2</sup>
FINES120NNBR (nitrile)	1,20 x 10 m	3 mm	3,4 kg/m <sup>2</sup>





## The grooved flooring

### Composition :

100% SBR rubber

### Applications :

protection of industrial floors as well as shelving or workbenches

### Advantages:

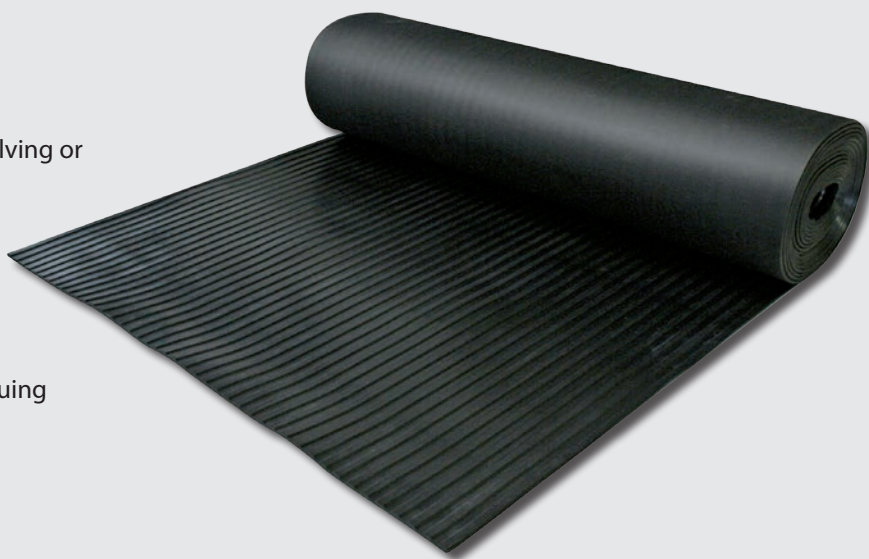
- antislip
- flexible
- high resistance to wear and tear
- fabric imprint lower surface for easy gluing

### Colors:

- black
- other colors: contact us

### + Info :

two-component PU glue available from stock: contact us



Reference	Dimensions	Thickness	Weight
CANNELE120N6 (black)	1,20 x 10 m	6 mm	6,5 kg/m <sup>2</sup>
CANNELE100N6 (black)	1,00 x 10 m	6 mm	6,5 kg/m <sup>2</sup>



# Manufactured rubber in rolls

## Custom made rubber mat

### Composition:

manufactured rubber (different grades: natural rubber, SBR, nitrile, EPDM, anti-abrasion ...)

### Applications:

protection of industrial floors as well as shelves or workbenches

### Advantages:

- antislip
- sound-proofing
- excellent resistance to wear and tear

### Colors:

according to quality

### + Info:

exists with or without fabric inlay, with fabric imprint on the lower surface for ease of gluing and in different thicknesses: please contact us



Reference	Designation	Dimensions	Thickness in mm	Number of folds	Upper / Lower surface finish
CCO1FL1FIT2	CCO1FL1FIT2 Rubber	1,40 x 10 m	2 mm	0	Smooth / fabric imprint
CCO2FL3	CCO2FL3 Rubber	1,40 x 10 m	3 mm	0	Smooth / smooth
CCO1FLFIT2P4	CCO1FLFIT2P4 Rubber	1,40 x 10 m	4 mm	2	Smooth / fabric imprint
CCN2FL4	CCN2FL4 Rubber	1,40 x 10 m	4 mm	0	Smooth / smooth
CCO2FL6	CCO2FL6 Rubber	1,40 x 10 m	6 mm	0	Smooth / smooth
CCO2FL6IT	CCO2FL6IT Rubber	1,50 x 10 m - 2,00 x 10 m	6 mm	1	Smooth / smooth
IDSSHEET4MM	IDSHEET 4 mm Rubber	Width 2m - Length up to 60m	4 mm	1	Smooth / textile insertion

Contact us for other quality

## BLACKSTAR

### Scraper strip

**Composition :** rubber

**Applications :** snow plows, industrial scrapers

### Advantages :

- very resistant to abrasion
- allows quality scraping
- adaptable to most scrapers

**Colours:** black

### + Info :

Cut to measure in length and width.



Reference	Dimensions	Thickness	Abrasion
BLACKSTAR 2 PLIES - CLOTH	140 x 2000 mm	25 mm	100 mm <sup>3</sup>
	140 x 2250 mm	25 mm	100 mm <sup>3</sup>
	140 x 2500 mm	25 mm	100 mm <sup>3</sup>
BLACKSTAR NON CLOTH	140 x 2000 mm	25 mm	100 mm <sup>3</sup>
	140 x 2250 mm	25 mm	100 mm <sup>3</sup>
	140 x 2500 mm	25 mm	100 mm <sup>3</sup>







## Electric insulating mat

### Composition:

EPDM

### Applications:

high-voltage transformer stations, stations which require people to be isolated against electric shock from certain devices such as electrical cabinets, etc.

### Environment: dry

### Advantages:

- light thanks to its low thickness
- conforms to IEC 6 11 11 Standard
- good abrasion resistance
- antislip
- easy to clean

### Color:

Grey

### + Info:

cutting on request  
recommended replacement every 2 years



IEC 6 11 11 Standard:

Class	Maximum operating voltage	Test voltage	Proof voltage
0	1 000 V	5 000 V	10 000 V
3	26 500 V	30 000 V	40 000 V
4	36 000 V	40 000 V	50 000 V

Reference	Dimensions	Thickness	IEC 6 11 11 Class	Weight
M38CLASSE0	1,0 x 10,0 m	3 mm	Class 0	3,8 kg/m <sup>2</sup>
M38CLASSE3	1,0 x 10,0 m	4,5 mm	Class 3	6,8 kg/m <sup>2</sup>
M38CLASSE4	1,0 x 10,0 m	6,5 mm	Class 4	10,5 kg/m <sup>2</sup>



## 8110

## Recycled rubber roll

**Composition:** recycled rubber aggregates agglomerated with a polyurethane binder

**Applications:** indoor and outdoor use: protection of industrial or commercial floors

### Advantages:

- flexible
- antislip
- sound-proofing and thermal insulation
- improves walking comfort
- shock absorber
- porous, facilitates drainage
- easy to maintain and insensitive to water

**Laying:** glued with polyurethane glue (1 to 1,5 kg/m<sup>2</sup>)

**Color:** black



8110



Reference	Dimensions	Thickness	Weight
81104	1,5 x 30,0 m	4 mm	4,0 kg/m <sup>2</sup>
81106	1,5 x 20,0 m	6 mm	6,0 kg/m <sup>2</sup>
811010	1,5 x 12,0 m	10 mm	10,0 kg/m <sup>2</sup>



## To warn visually impaired or blind persons and signal a danger

### Composition:

100% natural rubber

**Applications:** To lay 50 cm ahead from danger, obstacle or level change: stairs, lifts, pedestrian crossings, platform edges ...

### Advantages:

- warn the visually impaired of a danger
- easy and quick installation
- antislip
- compliant with NF P 98-351 standard
- indoor or outdoor installation

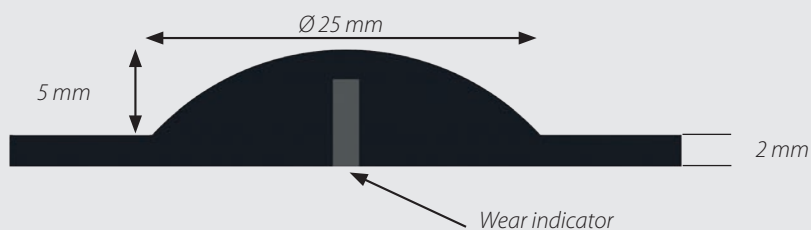
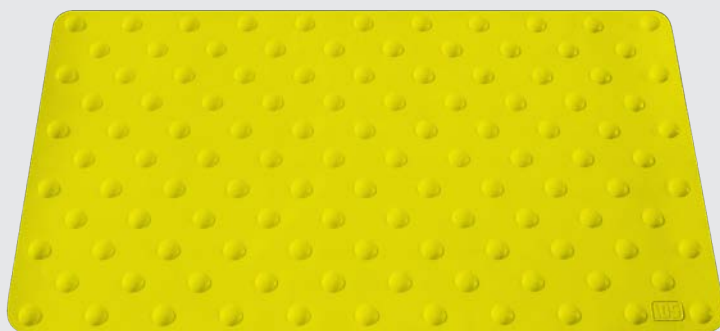
**Layout:** Degrease the underside.

Glued with two-component polyurethane glue

**Colors:** black, grey, yellow or white

### + Info:

wear indicator



Reference	Dimensions	Thickness	Weight
PODOCFL420800	42 x 80 cm	7 mm	1,2 kg/p





## To guide blind or visually impaired persons

**Composition:** 100% natural rubber

**Applications:** To place on roads or in public areas far from dangerous situations (pedestrian crossings, complex crossroads, roundabouts, obstacles, dangers ...)

### Advantages:

- discreet and effective guide that indicates the direction to follow
- reassures blind and visually impaired persons
- compliant with NF P 98-352 standard
- thanks to the contrast of texture and color, the visually impaired person can detect the change of relief with his cane or directly under his sole
- antislip

**Layout:** Degrease the underside and roughen by sanding.

Glued with polyurethane glue

### Colors:

black - other colors: white or grey (depending of the reference)

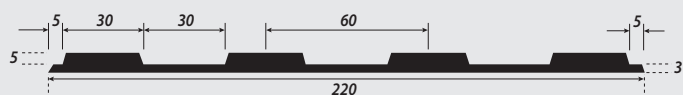


*Dalles et bandes PODOTACTILE*

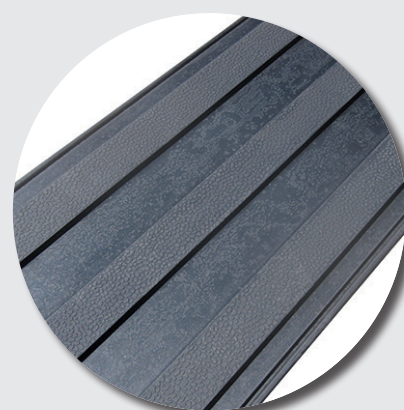
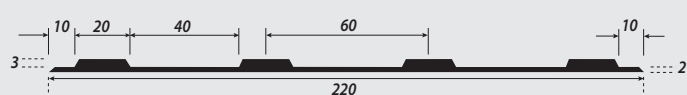
BAO17100EP7



BAO22100EP8



BAO22100EP5



Reference	Dimensions	Thickness	PUBLIC ACCESS BUILDING
BAOCFL17100EP7	17 x 100 cm	7 mm	1 - 2 (double rail installation)
BAOCFL22100EP8	22 x 100 cm	8 mm	1 - 2 (single rail installation)
BAOCFL22100EP5	22 x 100 cm	5 mm	3 - 5 (single rail installation)



## Insulates from the cold and drafts

### Composition :

100 % PVC

### Applications :

Warehouse doors, cold areas, unloading docks...

### Advantages :

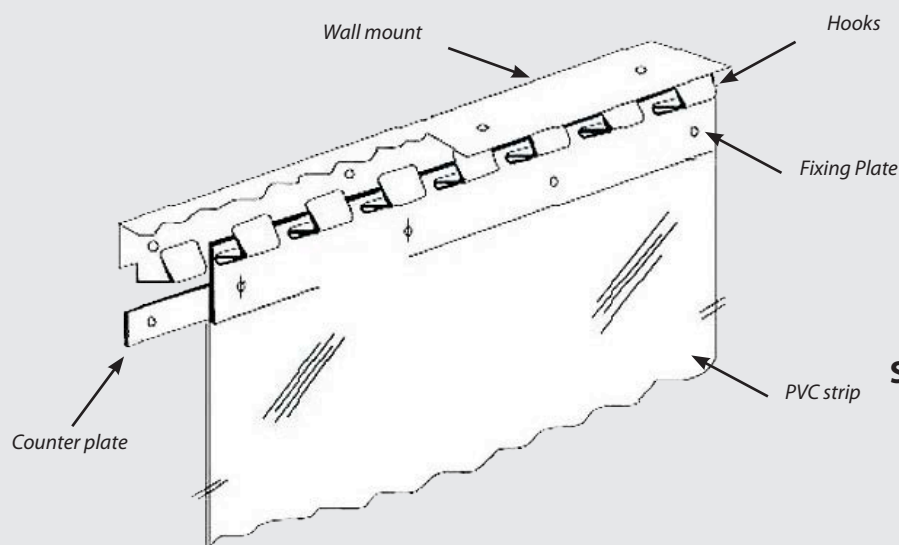
- insulates against cold and draughts
- lets light through
- allows people and vehicles to pass
- easy and quick installation
- custom manufacturing
- indoor or outdoor installation

### Installation :

Wall mount and fixing plate supplied

### + Info :

custom made



### Stainless steel wall mount

Length = 1 m

Number of hooks = 24

Fixing holes  $\varnothing = 6,2$  mm

### Fixing plate

Height = 45 mm

Hole spacing = 82 mm

Holes  $\varnothing = 5$  mm

200 plate = 3 fixing holes

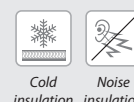
300 plate = fixing holes

400 plate = 5 fixing holes

Strip rolls length : 25 m or 50 m

Reference	Designation	Dimensions
LAN200	Strip 200	200 x 2 mm
LAN300	Strip 300	300 x 3mm
LAN400	Strip 400	400 x 2 mm
LANPROFILMUR	Wall mount	1000 mm
LANPLAQUE200	Fixing plate	200 mm
LANPLAQUE300	Fixing plate	300 mm
LANPLAQUE400	Fixing plate	400 mm

Fixing plates and wall mount come without screws





## The peelable mat: the trap for all soils

### Composition:

polyethylene sheet

### Applications:

laboratories, clean rooms, hospitals, any sterile place ...

### Advantages:

- very effective way to remove all dirt and dust thanks to the sticky surface
- 30 numbered adhesive sheets for easy count
- each sheet can be used several times before being removed
- adhesive lower surface for better adherence
- easy to use
- hygienic

### Color:

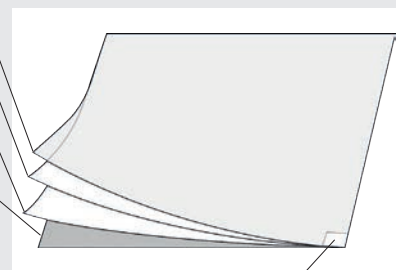
white



Protective sheet

Sheets

Lower protective sheet



Label indicating the number of the sheet

Reference	Dimensions	Thickness	Weight
TAC600900	60 x 90 cm	1,5 mm	1,0 kg/p
TAC4501140	45 x 114 cm	1,5 mm	0,8 kg/p
TAC6601140	66 x 114 cm	1,5 mm	1,1 kg/p

# FOOTBATH

## The optimal solution for foot disinfection

### Composition:

100% natural rubber

### Applications:

entrances requiring foot disinfection

### Advantages:

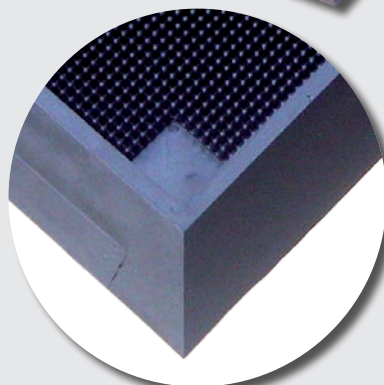
- easy to install
- optimal disinfection without loss of products
- Antislip
- scraper studs

### Color:

black



Beveled Border



scraper studs

Reference	Dimensions	Thickness	Weight
PEDILUVECC985810	81 x 98,5 cm	50 mm	Approx. 15 kg/p



## Gratings for use in wet environments

### Composition:

polyethylene and EVA

### Applications:

private pools, bathrooms, shower cabins, saunas, changing rooms, fitness centers, sports centers ...

banned in public pools

### Advantages:

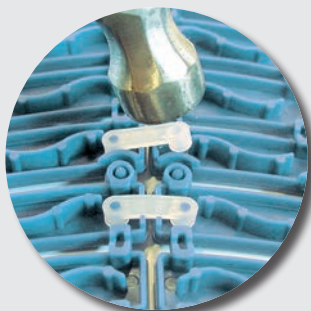
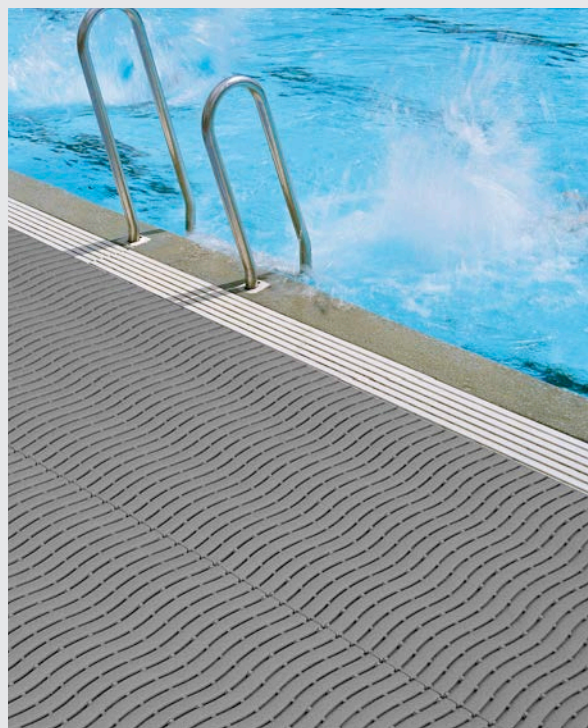
- non-slip surface thanks to studs
- ingenious structure allowing immediate drainage
- roll made of disconnecting strips 10 cm wide
- infinite length possible thanks to connections
- comfortable to walk barefoot
- odorless material
- antibacterial and fungicidal treatment for long-term protection
- sound-proofing
- resistant to temperature variations: - 35 ° C to + 70 ° C
- classification A, B and C according to DIN 51097 standard for slip resistance

### Colors:

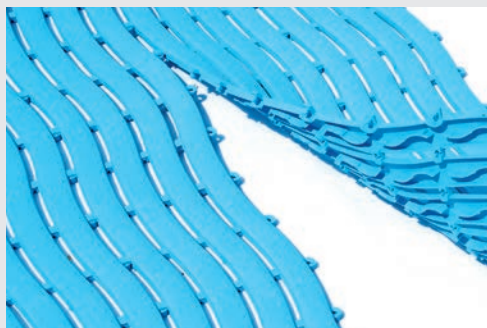
Blue or grey

### + Info:

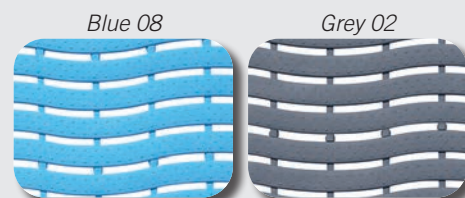
- custom length
- 3 to 4 connections per meter



Mounting clips with a hammer  
to join one roll to another



Disconnectable strips



Reference	Dimensions	Thickness	Weight
SOFTSTEPNRL02 (grey)	0,60 x 16 m	9 mm	1,32 kg/ml
SOFTSTEPNRL08 (blue)	0,60 x 16 m	9 mm	1,32 kg/ml
CLIPSOFTSTEPN30	length : 26 mm	6 mm	0,01 kg/p





## Professional gratings for use in wet environments

**Composition:** soft PVC

### Applications:

private pools, bathrooms, shower cabins, saunas, changing rooms, fitness centers, sports centers ...  
banned in public pools

### Advantages:

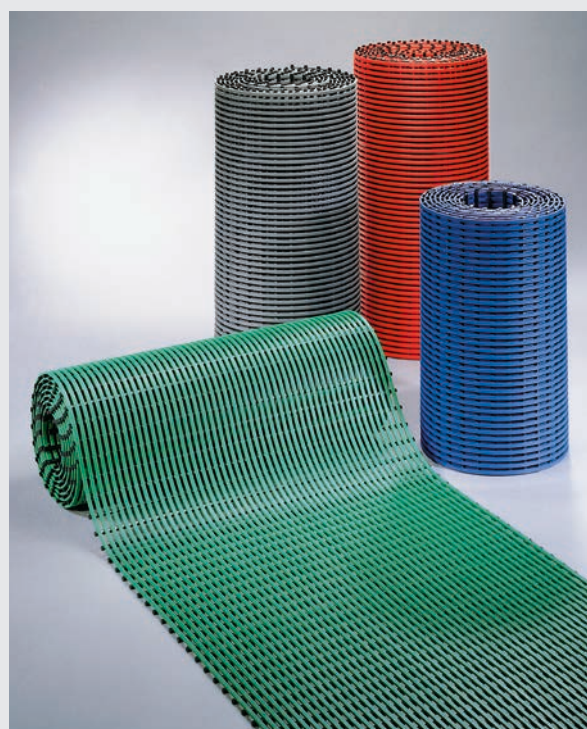
- antibacterial and fungicidal treatment
- original concept allowing drainage of water from all sides
- non-slip: C-group according to DIN 51097
- comfortable
- easy to install
- resistant to temperature variations (-5 °C to + 60 °C)
- available in various widths and lengths
- draining

### Colors:

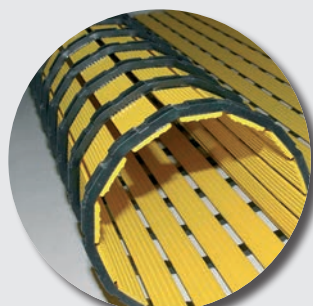
wide choice of colours, see colour chart below

### + Info:

- junctions available on request (reference EHA96 and EHA93)  
to attach one grating to another (3 to 5 fittings per meter)
- bevelled edges available upon request (for ref EHA96 and EHA93)



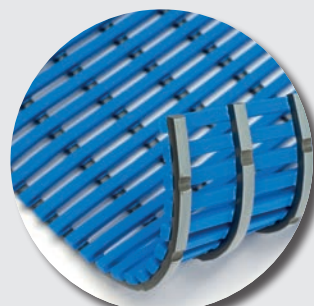
EHA 96



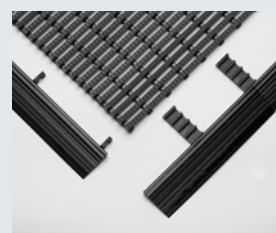
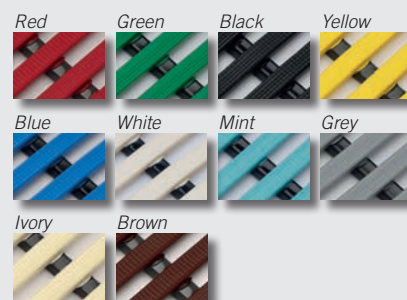
EHA 88



EHA 96



EHA 93



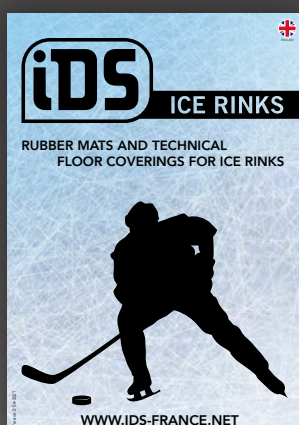
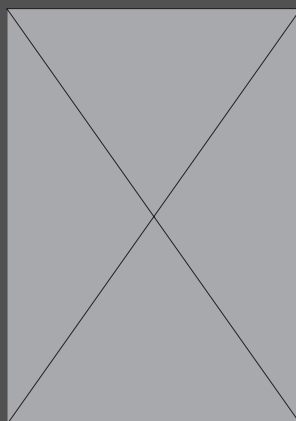
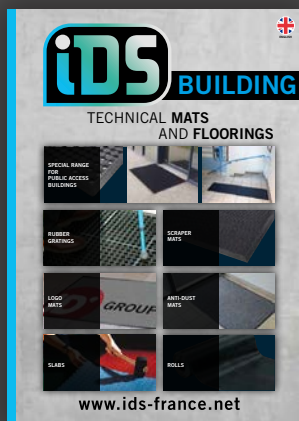
Bevelled edges

Reference	Standard Width	Standard length	Custom length	Thickness	Weight
EHA88	60, 80, 100 cm	10 m	All length up to 20 m	12 mm	6,0 kg/m <sup>2</sup>
EHA96	40, 60, 80, 100, 120 cm	10 m	All length up to 30 m	12 mm	5,5 kg/m <sup>2</sup>
EHA93	40, 50, 60, 80, 100, 120 cm	10 m	All length up to 30 m	14 mm	6,8 kg/m <sup>2</sup>

Other length contact us

Non-binding photos - Dimensions and weights are given as an indication - Product tolerance +/- 5%.





**IDS Industrie Développement Services**  
47, voie St Exupéry - Alpespace  
73 800 Porte de Savoie - France

**Tél : +33 479 843 606**  
**Fax : +33 479 843 610**

**ids@ids-france.net**

**www.ids-france.net**

